

FUSION 4 MODULAR GYM SYSTEM

UPPER BODY UNIT

OWNER'S MANUAL



SERIAL NUMBER HERE

DATE OF PURCHASE



INSTRUCTIONS

CONGRATULATIONS ON THE PURCHASE OF YOUR NEW FUSION 4 UPPER BODY STATION. THIS GYM WILL PROVIDE YOU WITH A LIFETIME OF ENJOYMENT TO MEET YOUR STRENGTH TRAINING NEEDS. BATCA FITNESS SYSTEMS STRIVES TO BUILD THE BEST QUALITY MULTI-STATION GYMS AND TO PACKAGE THESE GYMS IN SUCH A WAY TO AVOID ANY DAMAGE DURING SHIPPING.

IN ORDER TO GET STARTED WITH YOUR ASSEMBLY YOU SHOULD FIRST FAMILIARIZE YOURSELF WITH THIS MANUAL. IT IS RECOMMENDED THAT YOU READ THROUGH EACH STEP THOROUGHLY BEFORE YOU BEGIN. BEGIN BY OPENING YOUR BOXES AND SEPARATING ALL OF YOUR PARTS. VERIFY THAT ALL PARTS ARE ACCOUNTED FOR AND HAVE NO DAMAGE. WHEN ALL PARTS ARE ACCOUNTED FOR, YOU MAY BEGIN YOUR ASSEMBLY. SOME ITEMS MAY HAVE BEEN PRE-ASSEMBLED FOR YOUR CONVENIENCE. PLEASE NOTE THAT HARDWARE QUANTITIES SHOWN REFLECT TOTAL QUANTITIES FOR YOUR GYM AND MAY NOT REFLECT ACTUAL QUANTITIES IN EACH BAG. ASSEMBLE YOUR GYM ON A SOLID LEVEL SURFACE. THIS WILL ENSURE THE BEST POSSIBLE PERFORMANCE, FUNCTION, AND SAFETY FOR THE GYM AND YOUR WORKOUT.

ASSEMBLE YOUR GYM ACCORDING TO THE STEP BY STEP INSTRUCTIONS FOUND IN THIS MANUAL. FAILURE TO DO SO WILL VOID YOUR WARRANTY AND MAY RESULT IN PERSONAL INJURY. AFTER ASSEMBLY, YOU SHOULD CHECK EACH STATION TO ENSURE CORRECT OPERATION. IF A PROBLEM ARISES, RECHECK YOUR ASSEMBLY WITH THESE INSTRUCTIONS TO VERIFY CORRECT ASSEMBLY. IF YOU ARE UNABLE TO CORRECT A PROBLEM OR HAVE QUESTIONS WITH YOUR ASSEMBLY PLEASE CONTACT YOUR AUTHORIZED BATCA DEALER.

WARNING

BATCA FITNESS SYSTEMS HAS BUILT THIS GYM TO GIVE YOU A SAFE, EFFECTIVE AND ENJOYABLE WORKOUT. HOWEVER, THERE IS A RISK ASSUMED BY INDIVIDUALS WHO USE THIS TYPE OF EQUIPMENT. IT IS VERY IMPORTANT THAT ALL WARNINGS AND INSTRUCTIONS ARE READ AND FOLLOWED BEFORE BEGINNING ANY EXERCISE PROGRAM.

IT IS ALSO VERY IMPORTANT TO READ AND FOLLOW THE PREVENTATIVE MAINTENANCE SCHEDULE DESCRIBED IN THIS MANUAL. IF ANY OF THE WARNING LABELS OR STICKERS ARE WORN, FADED, TORN, SCRATCHED OR MISSING THEY SHOULD BE REPLACED IMMEDIATELY.

WARNING: THERE IS A RISK ASSUMED BY INDIVIDUALS WHO USE THIS TYPE OF EQUIPMENT. TO MINIMIZE RISK ALWAYS FOLLOW THESE RULES.

- 1) IT IS ESSENTIAL THAT YOU CONSULT WITH YOUR PHYSICIAN BEFORE BEGINNING ANY EXERCISE PROGRAM.
- 2) INSPECT EQUIPMENT BEFORE EACH USE FOR LOOSE, WORN, OR FRAYED PARTS (INCLUDING CABLES, NUTS AND BOLTS). REPLACE PARTS AT FIRST SIGNS OF WEAR (USE ONLY GENUINE BATCA REPLACEMENT PARTS). USE OF EQUIPMENT THAT IS DAMAGED, WORN, FRAYED OR NOT COMPLETELY ASSEMBLED ON A SOLID, LEVEL SURFACE MAY RESULT IN INJURY.
- 3) MAKE SURE ALL ADJUSTMENT PINS ARE FULLY ENGAGED BEFORE USING EQUIPMENT.
- 4) KEEP ALL PARTS OF THE BODY AND CLOTHING OUTSIDE THE PATH OF ANY MOVING PARTS OF THE GYM. BE ALERT TO THE POSSIBILITY OF INJURY. DO NOT BE CARELESS.
- 5) MINORS AND CHILDREN SHOULD NOT BE ALLOWED TO PLAY ON OR AROUND THIS GYM.
- 6) IF YOU HAVE ANY QUESTIONS ON PROPER USE OR MAINTENANCE OF THIS GYM, DO NOT HESITATE TO CALL YOUR LOCAL BATCA FITNESS SYSTEMS DISTRIBUTOR OR BATCA FITNESS SYSTEMS AT (919) 255-1233. WWW.BATCAFITNESS.COM

TABLE OF CONTENTS

| | <u>PAGE</u> | | <u>PAGE</u> |
|-----------------------|-------------|---------------------------------------|-------------|
| INSTRUCTIONS | 2 | FUNCTIONAL ARM CABLE ROUTING | 20-21 |
| PARTS LISTING | 3-4 | WEIGHT STACK DECALS AND SERIAL NUMBER | 22 |
| HARDWARE COMPARISON | 5-8 | CABLE TENSION AND ADJUSTMENTS | 23-25 |
| MAIN FRAME ASSEMBLY | 9-13 | FINAL ASSEMBLY AND TROUBLESHOOTING | 26 |
| CABLE ROUTING | 14-17 | MAINTENANCE | 27 |
| UPHOLSTERY | 18 | WARRANTY | 28 |
| FUNCTIONAL ARM OPTION | 19 | FLOOR PLAN LAYOUT | 29 |

FRAME COMPONENTS

| ITEM NO. | PART NO. | DESCRIPTION | QTY |
|----------|-----------|------------------------------|-----|
| 1 | BFM-10566 | RIGHT VERTICAL SUPPORT | 1 |
| 2 | BFM-10593 | REAR BASE | 1 |
| 3 | BFM-10753 | MIDDLE FRAME ASSEMBLY | 1 |
| 4 | BFM-10770 | FRONT BASE SUPPORT | 1 |
| 5 | BFM-10583 | TOP SWIVEL PULLEY HOLDER | 2 |
| 6 | BFM-10567 | LEFT VERTICAL SUPPORT | 1 |
| 7 | BFM-10299 | TOP WEIGHT PLATE | 1 |
| 8 | BFM-51082 | SHROUD | 2 |
| 9 | BFM-51487 | GUIDE ROD HOLDER | 1 |
| 10 | BFM-51051 | GUIDE ROD | 2 |
| 11 | BFM-50256 | WEIGHT STACK PLATE | 19 |
| 12 | BFM-50529 | RUBBER DONUT | 2 |
| 13 | BFM-10733 | RIGHT SWING ARM ASSEMBLY | 1 |
| 14 | BFM-10737 | LEFT SWING ARM ASSEMBLY | 1 |
| 15 | BFM-10735 | RIGHT PRESS ARM ASSEMBLY | 1 |
| 16 | BFM-10736 | LEFT PRESS ARM ASSEMBLY | 1 |
| 17 | BFM-51148 | 1" ARM SHAFT | 1 |
| 18 | BFM-51080 | SPACER | 1 |
| 19 | BFM-10741 | SEAT FRAME ASSEMBLY | 1 |
| 20 | BFM-10580 | BACK CHROME ADJUSTMENT | 1 |
| 21 | BFM-10577 | 8" ADJUSTMENT SLEEVE | 1 |
| 22 | BFM-10579 | 10" CHROME ADJUSTMENT | 1 |
| 23 | BFM-50931 | THREADED AXLE | 1 |
| 24 | BFM-10755 | PRESS ARM CABLE LOCKOUT | 1 |
| 25 | BFM-10611 | CRISS-CROSS FREE FLOATER | 1 |
| 26 | BFM-10133 | FREE FLOATER | 2 |
| 27 | BFM-50345 | 4-1/2" PULLEY COVER | 2 |
| 28 | BFM-51022 | 1-1/4" PULLEY SPACER | 6 |
| 29 | BFM-50505 | 3-1/2" PULLEY COVER | 8 |
| 30 | BFL-50197 | MIDDLE FRAME CONNECTOR PLATE | 2 |
| 89 | BFM-52410 | FRONT SHROUD WITH LOGO | 1 |
| 92 | BFM-52416 | SWIVEL PULLEY COUNTER WEIGHT | 2 |

CABLES

| ITEM NO. | PART NO. | DESCRIPTION | QTY |
|----------|-----------|-----------------------------------|-----|
| 38 | CAB-13022 | WEIGHT STACK TO CABLE TIE OUT | 1 |
| 39 | CAB-13030 | FUSION FLOATING PULLEY CABLE | 1 |
| 40 | CAB-13031 | FUSION LAT PULL TO CABLE LOCKOUT | 2 |
| 86 | CAB-13032 | FUSION LAT PULL TO FUNCTIONAL ARM | 2 |

ACCESSORIES

| ITEM NO. | PART NO. | DESCRIPTION | QTY |
|----------|-----------|-----------------------|-----|
| 31 | BFM-51173 | WEIGHT STACK PULL PIN | 1 |
| 32 | BFM-10771 | PRESS ARM LOCK | 1 |
| 33 | BFC-10103 | STRAP HANDLE | 2 |

UPHOLSTERY

| ITEM NO. | PART NO. | DESCRIPTION | QTY |
|----------|-----------|----------------------|-----|
| 34 | BFP-52141 | BOTTOM PAD | 1 |
| 35 | BFP-52137 | HEAD PAD | 1 |
| 36 | BFP-52136 | BACK PAD WITH LUMBAR | 1 |
| 37 | BFU-10121 | 7" UPHOLSTERY ROLLER | 2 |

HARDWARE

| ITEM NO. | PART NUMBER | DESCRIPTION | QTY | ITEM NO. | PART NUMBER | DESCRIPTION | QTY |
|----------|-------------|-----------------------|-----|----------|-------------|---------------------------|-----|
| 41 | BFH-50253 | BEVELED LEVELER | 2 | 60 | BFP-51653 | SHCS 3/8"-16 x 1-1/4" | 4 |
| 42 | BFH-50337 | WAVY WASHER | 4 | 61 | BFH-50173 | 3-1/2" PULLEY | 16 |
| 43 | BFH-50165 | 1" SNAP RING | 6 | 62 | BFH-50174 | 4 1/2" PULLEY | 6 |
| 44 | BFH-50149 | 3/8" JAM NUT | 2 | 63 | BFH-50250 | 1-1/4" SHOULDER BOLT | 3 |
| 45 | BFP-52394 | SHCS 3/8"-16 x 2-1/2" | 2 | 64 | BFH-50267 | 5/16" NYLOCK | 3 |
| 46 | BFP-51799 | SHCS 3/8"-16 x 5" | 4 | 65 | BFP-51752 | SHCS 3/8"-16 x 2-1/4" | 2 |
| 47 | BFP-51756 | SHCS 3/8"-16 x 5-1/4" | 6 | 66 | BFH-50204 | 3/8" CURVED WASHER | 4 |
| 48 | BFH-50146 | 3/8" FLAT WASHER | 82 | 67 | BFH-50203 | 1/2" CURVED PULLEY SPACER | 8 |
| 49 | BFH-50147 | 3/8" LOCK WASHER | 16 | 68 | BFP-51759 | SHCS 3/8"-16 x 2" | 4 |
| 50 | BFH-50157 | 3/8" NYLOCK | 39 | 69 | BFP-51750 | SHCS 3/8"-16 x 2-3/4" | 8 |
| 51 | BFP-52340 | SHCS 3/8"-16 x 3/4" | 2 | 70 | BFP-51753 | SHCS 3/8"-16 x 4-3/4" | 6 |
| 52 | BFP-52401 | BHSCS 3/8"-16 x 1/2" | 4 | 71 | BFH-50622 | ROLLER END CAP | 2 |
| 53 | BFH-50144 | FHSCS 3/8"-16 x 3/4" | 2 | 72 | BFP-52430 | BHSCS 3/8"-16 x 3/4" | 2 |
| 54 | BFH-50220 | SHAFT COLLAR | 2 | 73 | BFP-52398 | SHCS 3/8"-16 x 7" | 1 |
| 55 | BFP-52400 | SHCS 1/2"-13 x 4 1/4" | 1 | 74 | BFP-52397 | SHCS 1/2"-13 x 3" | 1 |
| 56 | BFH-51201 | SHCS 1/2"-13 x 3 1/2" | 1 | 87 | BFH-50192 | WEIGHT STACK DECALS | 1 |
| 57 | BFP-51747 | SHCS 3/8"-16 x 3" | 2 | 88 | BFH-50262 | SILICON GEL PACK | 1 |
| 58 | BFH-50251 | 1/2" FLAT WASHER | 2 | 90 | BFH-50620 | BHSCS 3/8" x 1" | 2 |
| | | | | 91 | BFM-52421 | 1 1/2" ALUMINUM CAP | 2 |
| | | | | 93 | BFM-42450 | FUSION CABLE GUIDES | 2 |

FUNCTIONAL ARM COMPONENTS

| ITEM NO. | PART NUMBER | DESCRIPTION | QTY |
|----------|-------------|------------------------------|-----|
| 74 | BFM-10573 | FUNCTIONAL ARM MOUNT | 1 |
| 75 | BFM-10571 | USER RIGHT FUNCTIONAL ARM | 1 |
| 76 | BFM-10572 | USER LEFT FUNCTIONAL ARM | 1 |
| 77 | BFM-10582 | FUNCTIONAL ARM SWIVEL PULLEY | 2 |

FUNCTIONAL ARM HARDWARE

| ITEM NO. | PART NUMBER | DESCRIPTION | QTY |
|----------|-------------|-----------------------|-----|
| 79 | BFH-50146 | 3/8" FLAT WASHER | 16 |
| 80 | BFH-50157 | 3/8" NYLOCK | 14 |
| 81 | BFH-50173 | 3-1/2" PULLEY | 8 |
| 82 | BFP-51752 | SHCS 3/8"-16 x 2-1/4" | 8 |
| 83 | BFP-51759 | SHCS 3/8"-16 x 2" | 6 |

FUNCTIONAL ARM ACCESSORIES

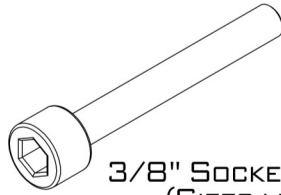
| ITEM NO. | PART NUMBER | DESCRIPTION | QTY |
|----------|-------------|--------------|-----|
| 84 | BFH-10103 | STRAP HANDLE | 2 |

CABLES

| ITEM NO. | PART NUMBER | DESCRIPTION | QTY |
|----------|-------------|-----------------------------------|-----|
| 85 | CAB-13032 | FUSION LAT PULL TO FUNCTIONAL ARM | 2 |

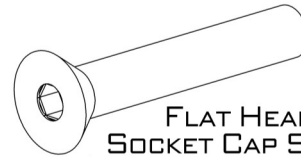
TOOLS REQUIRED

- 1/2" WRENCH
- 9/16" WRENCH
- 9/16" RATCHET
- 3/4" WRENCH
- 3/4" RATCHET
- ALLEN WRENCH SET
- TAPE MEASURE
- SNAP RING PLIERS



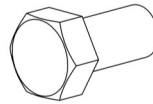
3/8" SOCKET HEAD CAP SCREW
(SIZES LISTED IN CHART)

| PART # | BOLT SIZE |
|-----------|---------------|
| BFP-52340 | 3/8" x 3/4" |
| BFP-52376 | 3/8" x 1" |
| BFP-51653 | 3/8" x 1 1/4" |
| BFP-51697 | 3/8" x 1 1/2" |
| BFP-51759 | 3/8" x 2" |
| BFP-51752 | 3/8" x 2 1/4" |
| BFP-51750 | 3/8" x 2 3/4" |
| BFP-51747 | 3/8" x 3" |
| BFP-51748 | 3/8" x 3 1/4" |
| BFP-51760 | 3/8" x 3 1/2" |
| BFP-52345 | 3/8" x 4" |
| BFP-51884 | 3/8" x 4 1/4" |
| BFP-51751 | 3/8" x 4 1/2" |
| BFP-51753 | 3/8" x 4 3/4" |
| BFP-51799 | 3/8" x 5" |
| BFP-51756 | 3/8" x 5 1/4" |
| BFP-52364 | 3/8" x 6" |

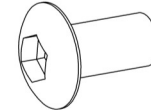


FLAT HEAD
SOCKET CAP SCREW
(SIZES LISTED IN CHART)

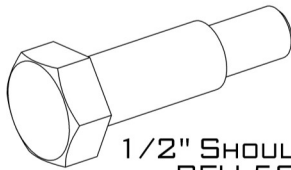
| PART # | BOLT SIZE |
|-----------|------------------------|
| BFH-50144 | FHSCS 3/8"-16 x 1" |
| BFP-52377 | FHSCS 3/8" x 2" |
| BFH-50145 | FHSCS 3/8"-16 x 2 1/4" |
| BFP-52374 | FHSCS 3/8" x 2 3/4" |



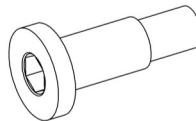
HEX HEAD CAP SCREW
(HCS) 3/8" x 3/4"
(BFH-50254)



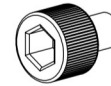
BUTTON HEAD
SOCKET CAP SCREW
(BHSCS) 3/8" x 3/4"
BFP-52430



1/2" SHOULDER BOLT
BFH-50249



1 1/4" SHOULDER BOLT
BFH-50250



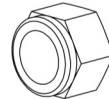
ZINC PLATED
SHCS 5/16" x 1/2"
(BFP-52372)



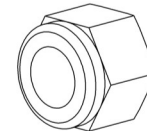
5/16"-18 NYLOCK
BFH-50267



3/8"-16 THIN
NYLOCK
BFH-50247



3/8"-16 NYLOCK
BFH-50157



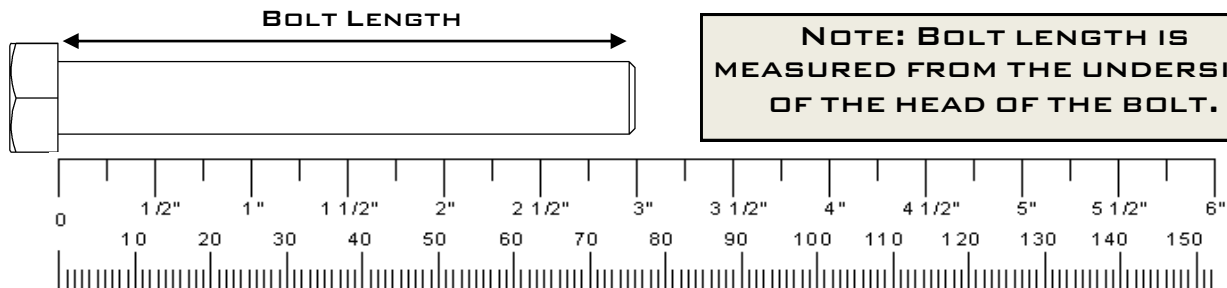
1/2"-13 NYLOCK
BFH-50251



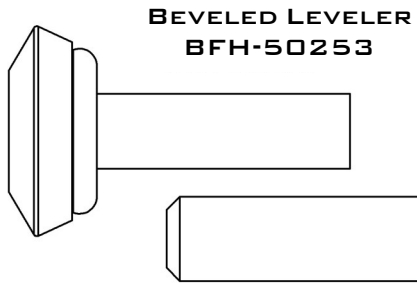
1/2" JAM NUT
BFH-50256



3/8" JAM NUT
BFH-50149



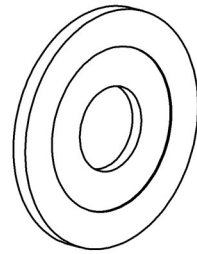
NOTE: BOLT LENGTH IS MEASURED FROM THE UNDERSIDE OF THE HEAD OF THE BOLT.



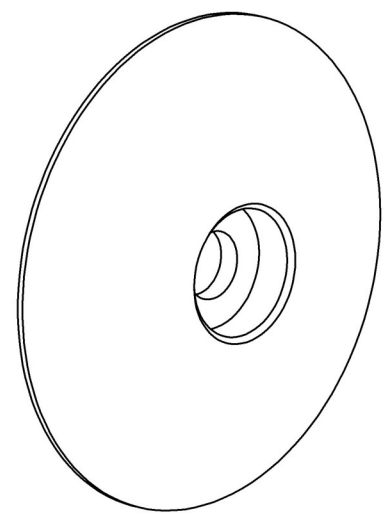
**BEVELED LEVELER
BFH-50253**



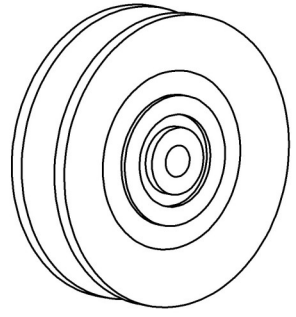
**LARGE FLAT LEVELER
BFH-50339**



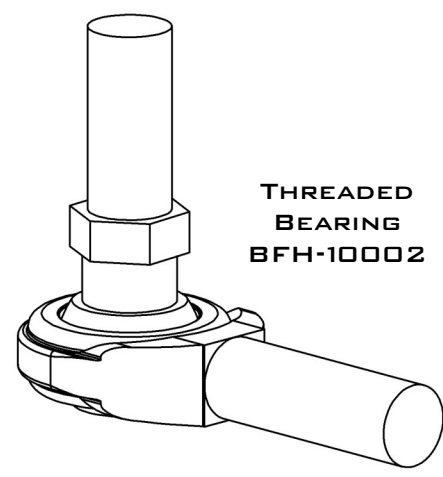
**3" PLASTIC
WASHER**



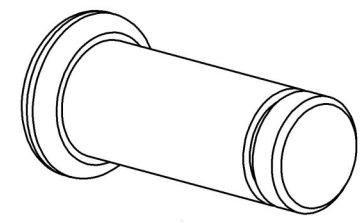
**UPHOLSTERY
CAP**



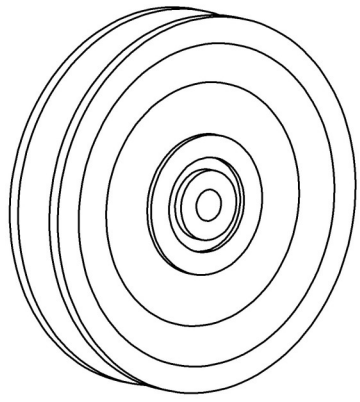
**3 1/2" PULLEY
BFH-50173**



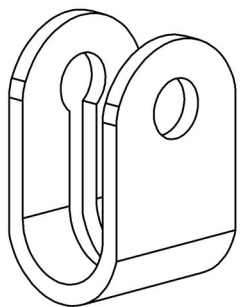
**THREADED
BEARING
BFH-10002**



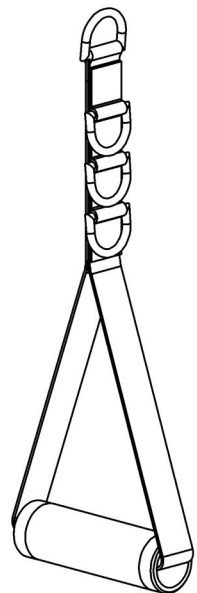
**PIN
BFH-50238**



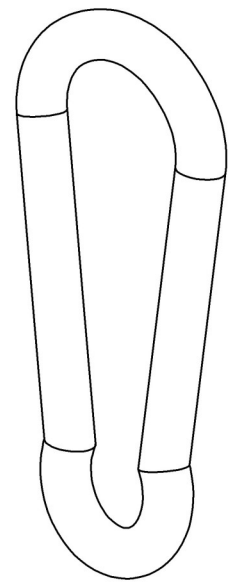
**4 1/2" PULLEY
BFH-50174**



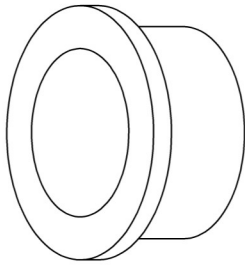
**CABLE STRAP
BFH-50227**



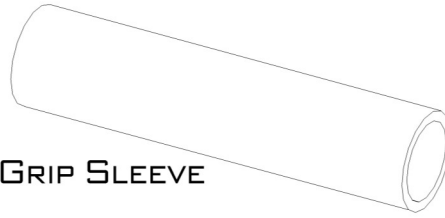
**STRAP HANDLE
BFC-10103**



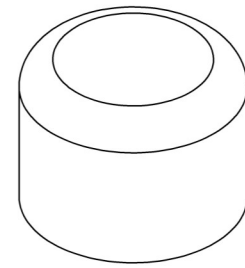
**SNAP HOOK
BFH-50188**



1" BRONZE BUSHING
BFH-50101



GRIP SLEEVE



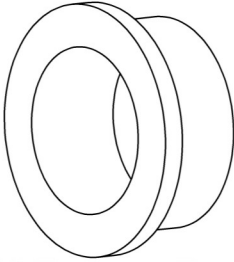
1" OUTER PLASTIC CAP
BFH-50111



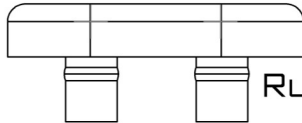
GRIP CAP



GRIP COLLAR

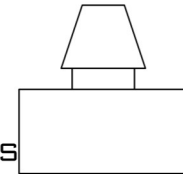


1" BRONZE BUSHING X 1/2 L
BFH-50297



BFH-50222

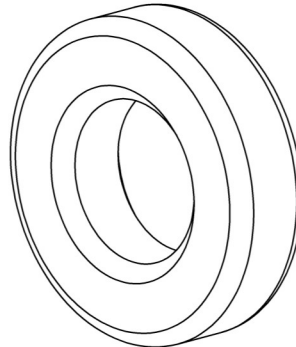
RUBBER BUMPERS



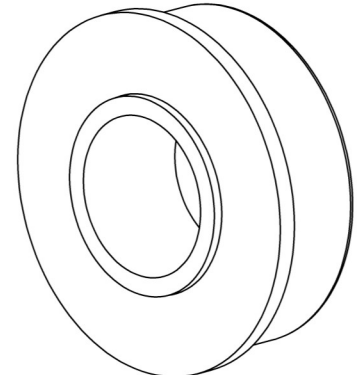
BFH-50200



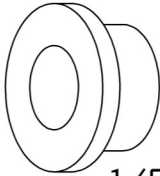
5/8" BRONZE BUSHING
BFH-50102



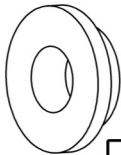
RADIAL BEARING
BFH-50602



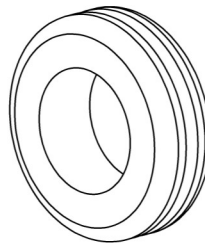
FLANGED RADIAL BEARING
BFP-51949



1/2" BRONZE BUSHING
BFH-50103



CABLE PIVOT BUSHING
BFH-50248



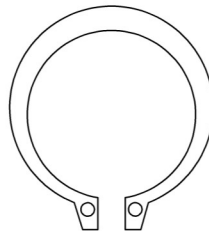
RUBBER GROMMET
BFH-50199



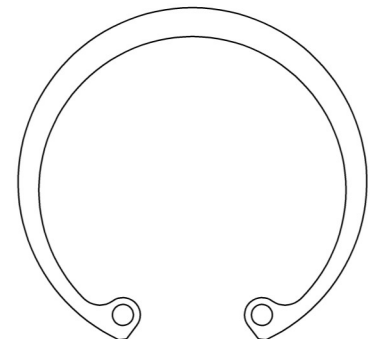
SHORT 1/2" BUSHING
BFH-50244



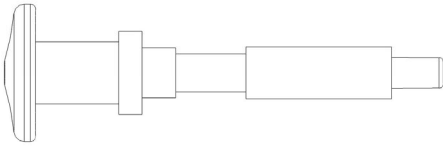
1/2" SNAP RING
BFH-50166



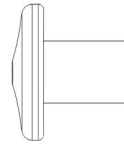
1" SNAP RING
BFH-50165



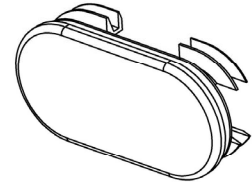
2 1/2" SNAP RING
BFH-50604



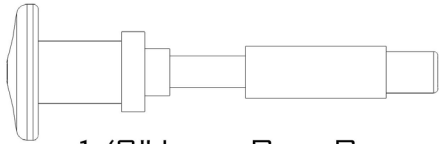
3/8" LONG PULL PIN
BFM-51176



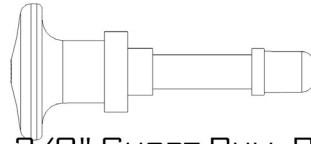
PULL PIN HANDLE
BFM-51181



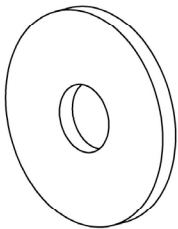
PLASTIC END CAP
(BFP-52101)



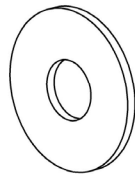
1/2" LONG PULL PIN
BFM-51172



3/8" SHORT PULL PIN
BFM-51175



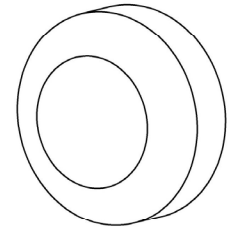
3/8" FENDER WASHER
BFH-50242



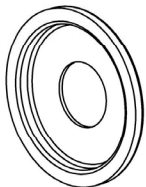
3/8" FLAT WASHER
BFH-50146



3/8" CURVED WASHER
BFH-50204



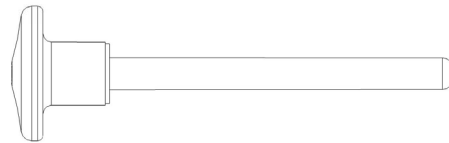
SCREW CAP COVER
BFH-50112



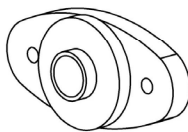
SCREW CAP WASHER
BFH-50113



3/8" LOCK WASHER
BFH-50147



MAGNETIC WEIGHT STACK PIN
BFM-51173



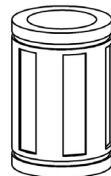
SIDE MOUNTED
FLANGE BEARING
BFH-50171



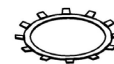
BAR CATCH RUBBER
SLEEVE
BFH-50240

ITEMS NOT SHOWN.

| PART # | DESCRIPTION |
|-----------|-----------------------|
| BFH-50259 | MIDNIGHT BLACK PAINT |
| BFH-50278 | SILVER METALLIC PAINT |
| BFH-50198 | LARGE LOGO |
| BFH-50236 | FOAM GRIP |
| BFH-50262 | SILICON GEL PACK |
| BFC-10101 | 1 INCH CHAIN |
| BFC-10102 | 12 INCH CHAIN |



LINEAR BEARING
BFH-50627



BEARING RETAINING
CLIP
BFH-50628



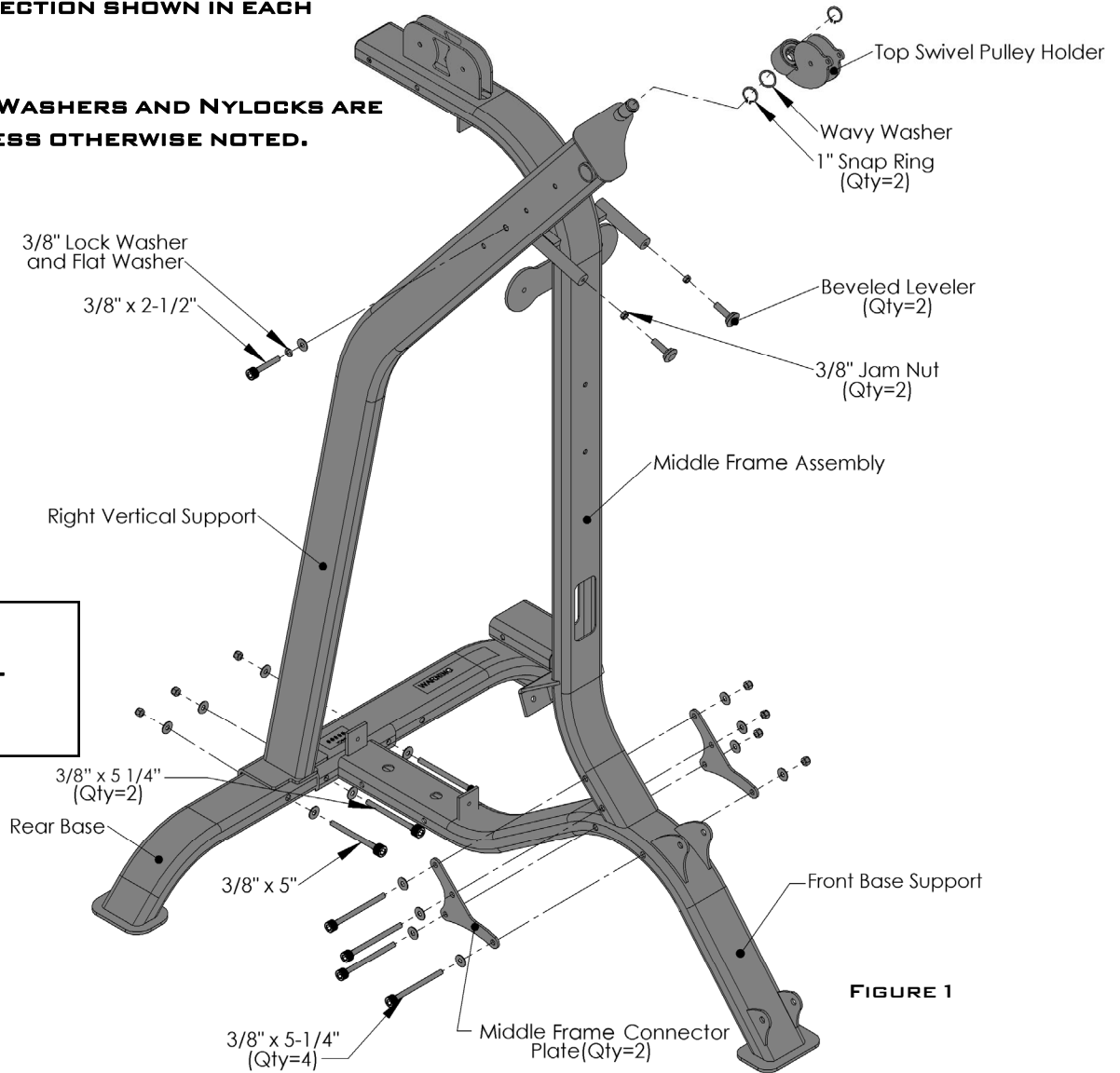
PLEASE FOLLOW ALL DIRECTIONS VERY CAREFULLY FOR PROPER INSTALLATION.

STEP 1:



NOTE: FOR A MORE CONSISTENT APPEARANCE, POSITION ALL BOLTS IN THE DIRECTION SHOWN IN EACH FIGURE.

- **ALL FLAT WASHERS AND NYLOCKS ARE 3/8" UNLESS OTHERWISE NOTED.**

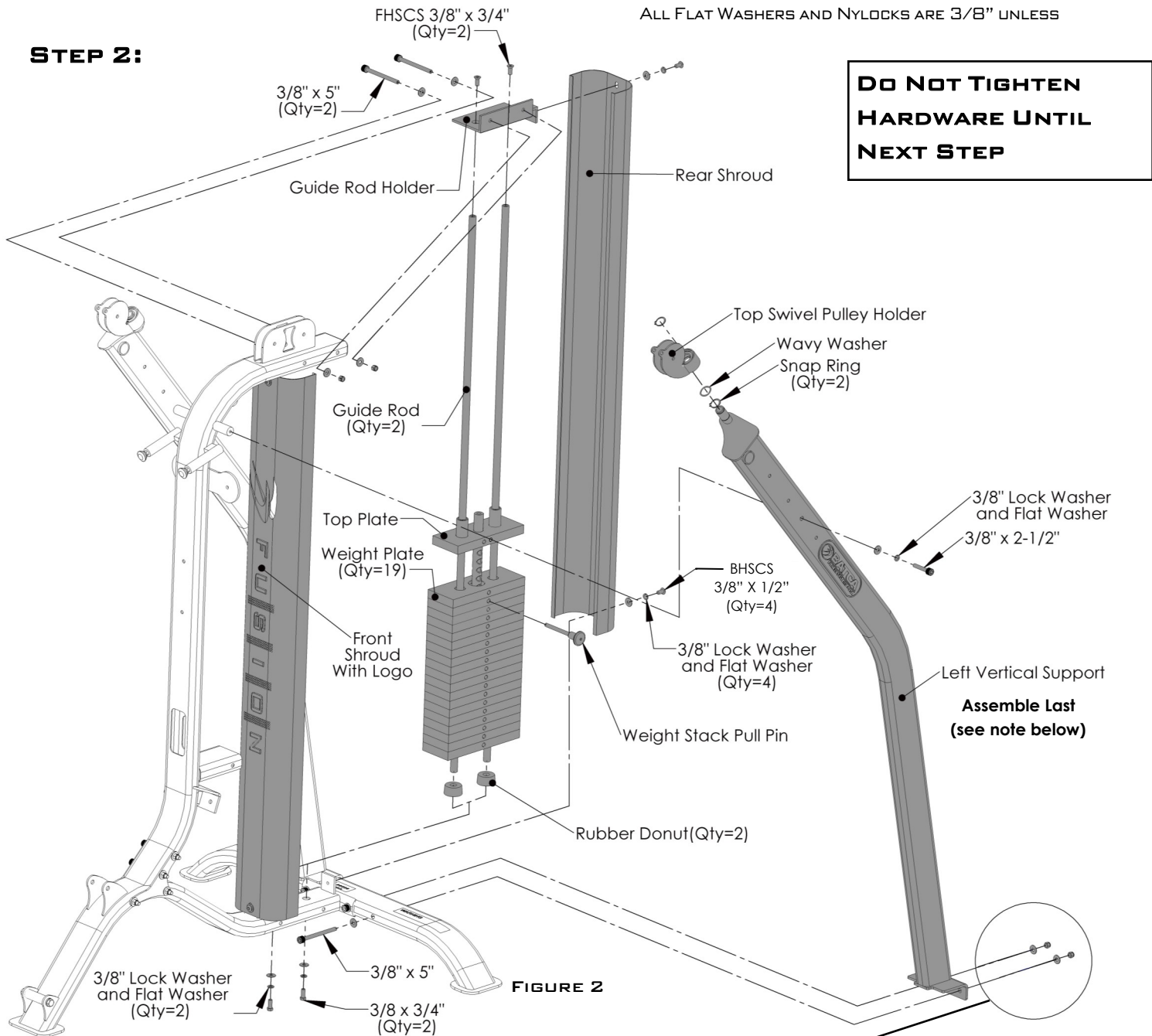


DO NOT TIGHTEN HARDWARE UNTIL NEXT STEP

FIGURE 1

| ITEM # | PART # | DESCRIPTION | QTY | ITEM # | PART # | DESCRIPTION | QTY |
|--------|-----------|------------------------------|-----|--------|------------|-----------------------|-----|
| 1 | BFM-10566 | RIGHT VERTICAL SUPPORT | 1 | 44 | BFH-50149 | 3/8" JAM NUT | 2 |
| 2 | BFM-10593 | REAR BASE | 1 | 45 | BFP-52394 | SHCS 3/8"-16 x 2 1/2" | 1 |
| 3 | BFM-10753 | MIDDLE FRAME ASSEMBLY | 1 | 46 | BFP-551799 | SHCS 3/8"-16 x 5" | 1 |
| 4 | BFM-10770 | FRONT BASE SUPPORT | 1 | 47 | BFP-51756 | SHCS 3/8"-16 x 5 1/4" | 6 |
| 5 | BFM-10583 | TOP SWIVEL PULLEY HOLDER | 1 | 48 | BFH-50146 | 3/8" FLAT WASHER | 15 |
| 30 | BFL-50197 | MIDDLE FRAME CONNECTOR PLATE | 2 | 49 | BFH-50147 | 3/8" LOCK WASHER | 1 |
| 41 | BFH-50253 | BEVELED LEVELER | 2 | 50 | BFH-50157 | 3/8" NYLOCK | 7 |
| 42 | BFH-50337 | WAVY WASHER | 1 | | | | |
| 43 | BFH-50165 | 1" SNAP RING | 2 | | | | |

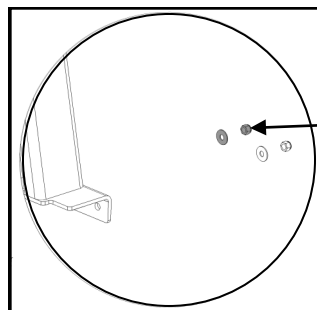
STEP 2:



**DO NOT TIGHTEN
HARDWARE UNTIL
NEXT STEP**

FIGURE 2

| ITEM # | PART # | DESCRIPTION | QTY |
|--------|-----------|--------------------------|-----|
| 5 | BFM-10583 | TOP SWIVEL PULLEY HOLDER | 1 |
| 6 | BFM-10567 | LEFT VERTICAL SUPPORT | 1 |
| 7 | BFM-10299 | TOP WEIGHT PLATE | 1 |
| 8 | BFM-51082 | SHROUD | 2 |
| 89 | BFM-52410 | FRONT SHROUD WITH LOGO | 1 |
| 9 | BFM-51487 | GUIDE ROD HOLDER | 1 |
| 10 | BFM-51051 | GUIDE ROD | 2 |
| 11 | BFM-50256 | WEIGHT STACK PLATE | 19 |
| 12 | BFM-50529 | RUBBER DONUT | 2 |
| 31 | BFM-51173 | WEIGHT STACK PULL PIN | 1 |
| 42 | BFH-50337 | WAVY WASHER | 1 |
| 43 | BFH-50165 | 1" SNAP RING | 2 |
| 45 | BFP-52394 | SHCS 3/8"-16 x 2 1/2" | 1 |
| 46 | BFP-51799 | SHCS 3/8"-16 x 5" | 3 |
| 48 | BFH-50146 | 3/8" FLAT WASHER | 13 |



THIS 3/8" NYLOCK AND FLAT WASHER ARE FROM STEP 1.

DO NOT REMOVE THE NYLOCK OR INSTALL THE LEFT VERTICAL SUPPORT UNTIL THE WEIGHT STACK AND THE SHROUDS HAVE BEEN COMPLETELY ASSEMBLED.

| ITEM # | PART # | DESCRIPTION | QTY |
|--------|-----------|----------------------|-----|
| 49 | BFH-50147 | 3/8" LOCK WASHER | 7 |
| 50 | BFH-50157 | 3/8" NYLOCK | 3 |
| 51 | BFP-52340 | SHCS 3/8"-16 x 3/4" | 2 |
| 52 | BFP-52401 | BHSCS 3/8"-16 x 1/2" | 4 |
| 53 | BFH-50144 | FHSCS 3/8"-16 x 3/4" | 2 |

STEP 3:

**MAKE SURE ALL
HARDWARE IS
TIGHTENED BEFORE
NEXT STEP.**

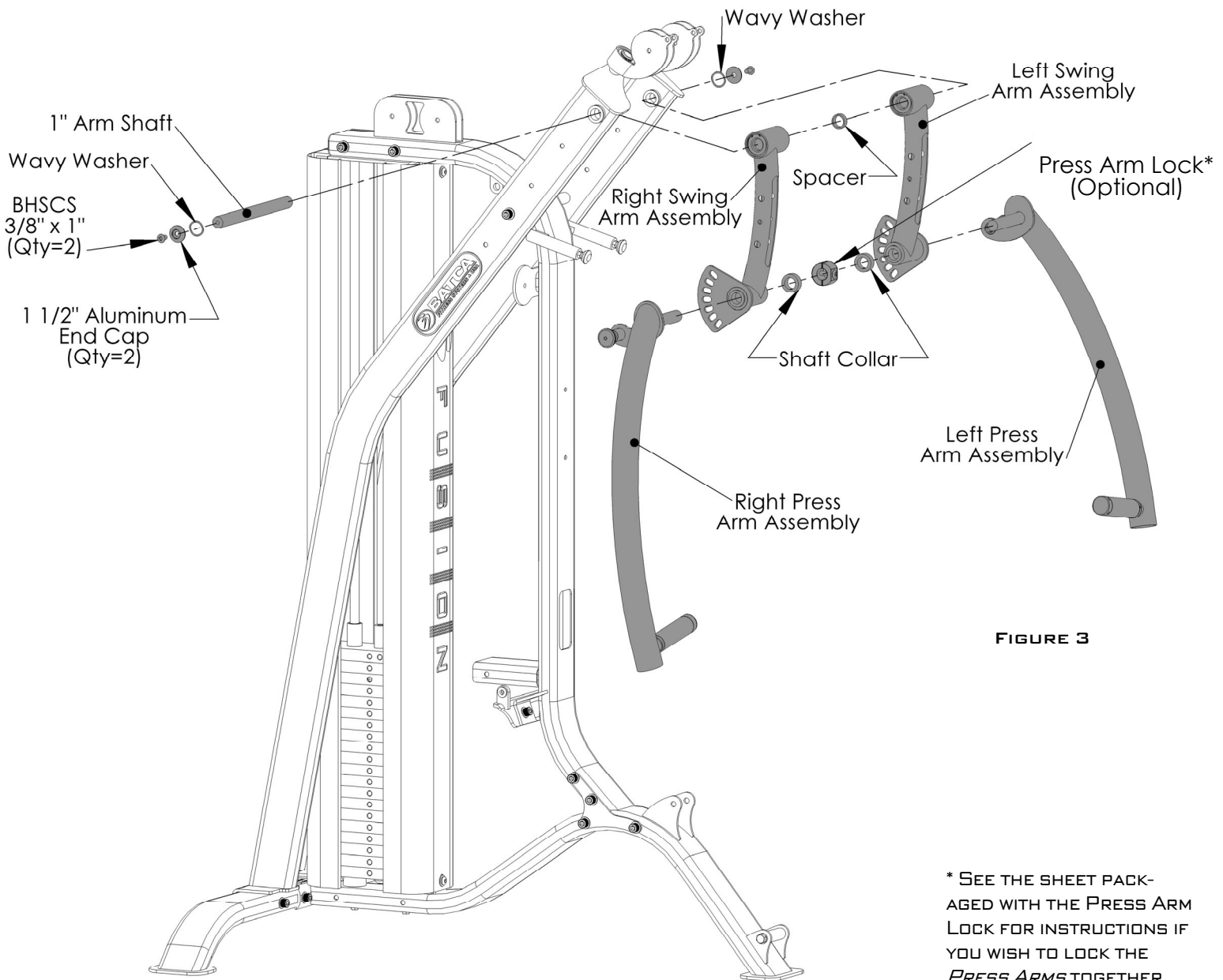


FIGURE 3

* SEE THE SHEET PACKAGED WITH THE PRESS ARM LOCK FOR INSTRUCTIONS IF YOU WISH TO LOCK THE PRESS ARMS TOGETHER.

ALL FLAT WASHERS AND NYLOCKS ARE 3/8" UNLESS OTHERWISE NOTED.

| ITEM # | PART # | DESCRIPTION | QTY |
|--------|-----------|--------------------------|-----|
| 13 | BFM-10733 | RIGHT SWING ARM ASSEMBLY | 1 |
| 14 | BFM-10737 | LEFT SWING ARM ASSEMBLY | 1 |
| 15 | BFM-10735 | RIGHT PRESS ARM ASSEMBLY | 1 |
| 16 | BFM-10736 | LEFT PRESS ARM ASSEMBLY | 1 |
| 17 | BFM-51148 | 1" ARM SHAFT | 1 |
| 18 | BFM-51080 | SPACER | 1 |

| Item # | Part # | Description | Qty |
|--------|-----------|---------------------------|-----|
| 32 | BFM-10771 | PRESS ARM LOCK (OPTIONAL) | 1 |
| 42 | BFH-50337 | WAVY WASHER | 2 |
| 90 | BFH-50620 | BHSCS 3/8" x 1" | 2 |
| 54 | BFH-50220 | SHAFT COLLAR | 2 |
| 91 | BFM-52421 | 1 1/2" ALUMINUM CAP | 2 |

STEP 4:

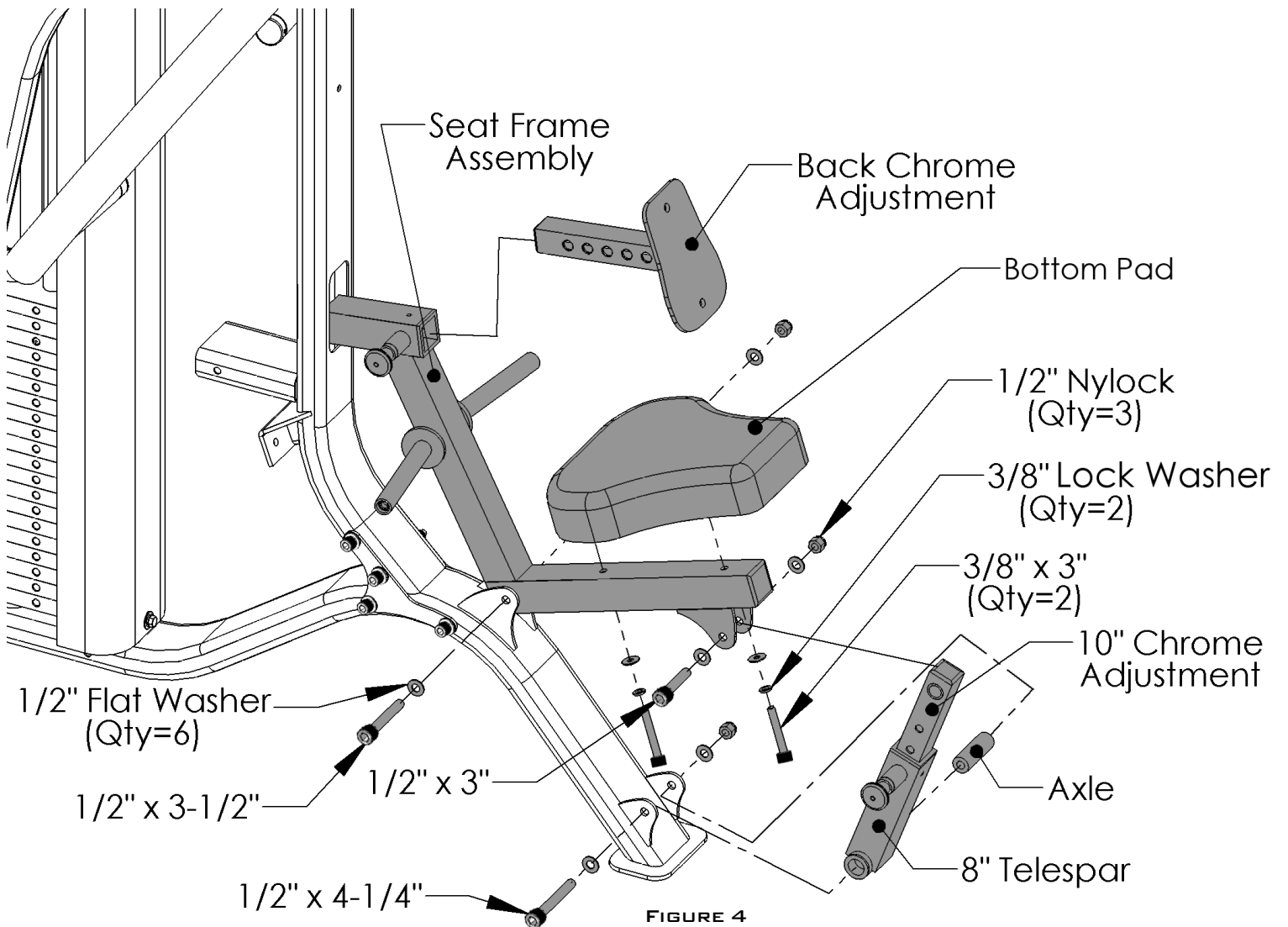


FIGURE 4

| ITEM # | PART # | DESCRIPTION | QTY |
|--------|-----------|------------------------|-----|
| 34 | BFP-52141 | BOTTOM PAD | 1 |
| 19 | BFM-10741 | SEAT FRAME ASSEMBLY | 1 |
| 20 | BFM-10580 | BACK CHROME ADJUSTMENT | 1 |
| 21 | BFM-10577 | 8" ADJUSTMENT SLEEVE | 1 |
| 22 | BFM-10579 | 10" CHROME ADJUSTMENT | 1 |
| 23 | BFM-50931 | THREADED AXLE | 1 |
| 48 | BFH-50146 | 3/8" FLAT WASHER | 2 |
| 49 | BFH-50147 | 3/8" LOCK WASHER | 2 |
| 55 | BFP-52400 | SHCS 1/2"-13 x 4 1/4" | 1 |
| 56 | BFH-51201 | SHCS 1/2"-13 x 3 1/2" | 1 |
| 57 | BFP-52397 | SHCS 3/8"-16 x 3" | 2 |
| 58 | BFH-50251 | 1/2" FLAT WASHER | 2 |
| 50 | BFH-50157 | 3/8" NYLOCK | 2 |
| 74 | BFH-50136 | SHCS 1/2"-13 x 3" | 1 |



NOTE: MAKE SURE THE *BOTTOM PAD* IS BOLTED ON BEFORE THE *SEAT FRAME ASSEMBLY* IS INSTALLED.

ALL FLAT WASHERS AND NYLOCKS ARE 3/8" UNLESS OTHERWISE NOTED.

STEP 5:



NOTE: IF FUNCTIONAL ARM OPTION IS PURCHASED THEN SKIP THIS STEP

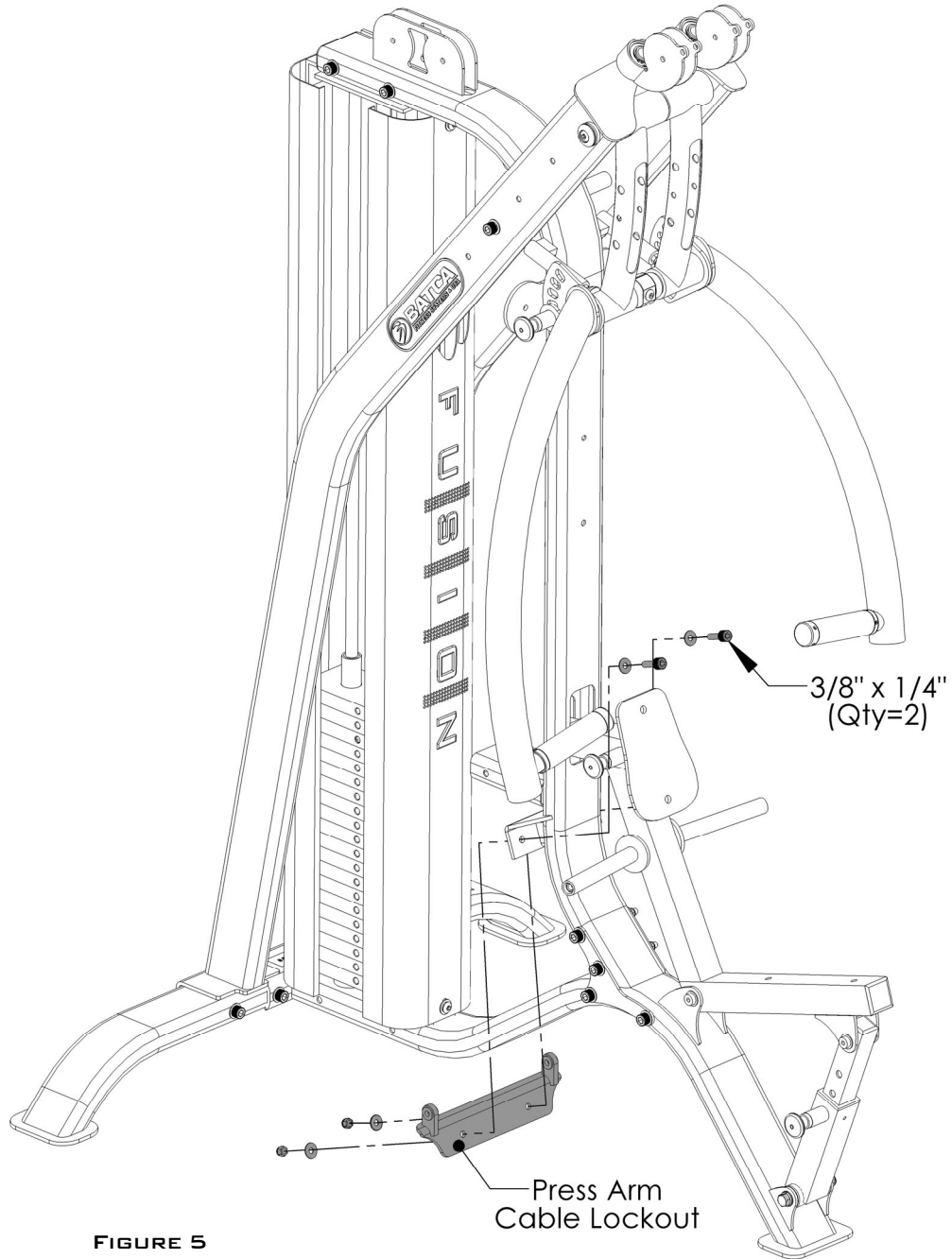


FIGURE 5

ALL FLAT WASHERS AND NYLOCKS ARE 3/8" UNLESS OTHERWISE NOTED.

| ITEM # | PART # | DESCRIPTION | QTY |
|--------|-----------|-------------------------|-----|
| 24 | BFM-10755 | PRESS ARM CABLE LOCKOUT | 1 |
| 48 | BFM-50146 | 3/8" FLAT WASHER | 4 |
| 50 | BFM-50157 | 3/8" NYLOCK | 2 |
| 60 | BFP-51653 | SHCS 3/8"-16 x 1 1/4" | 2 |

CABLE ROUTING

STEP 6:



NOTE: EACH CABLE WITH A THREADED BOLT ON EITHER END MUST BE THREADED AT LEAST 1/2" INTO ITS ATTACHMENT.

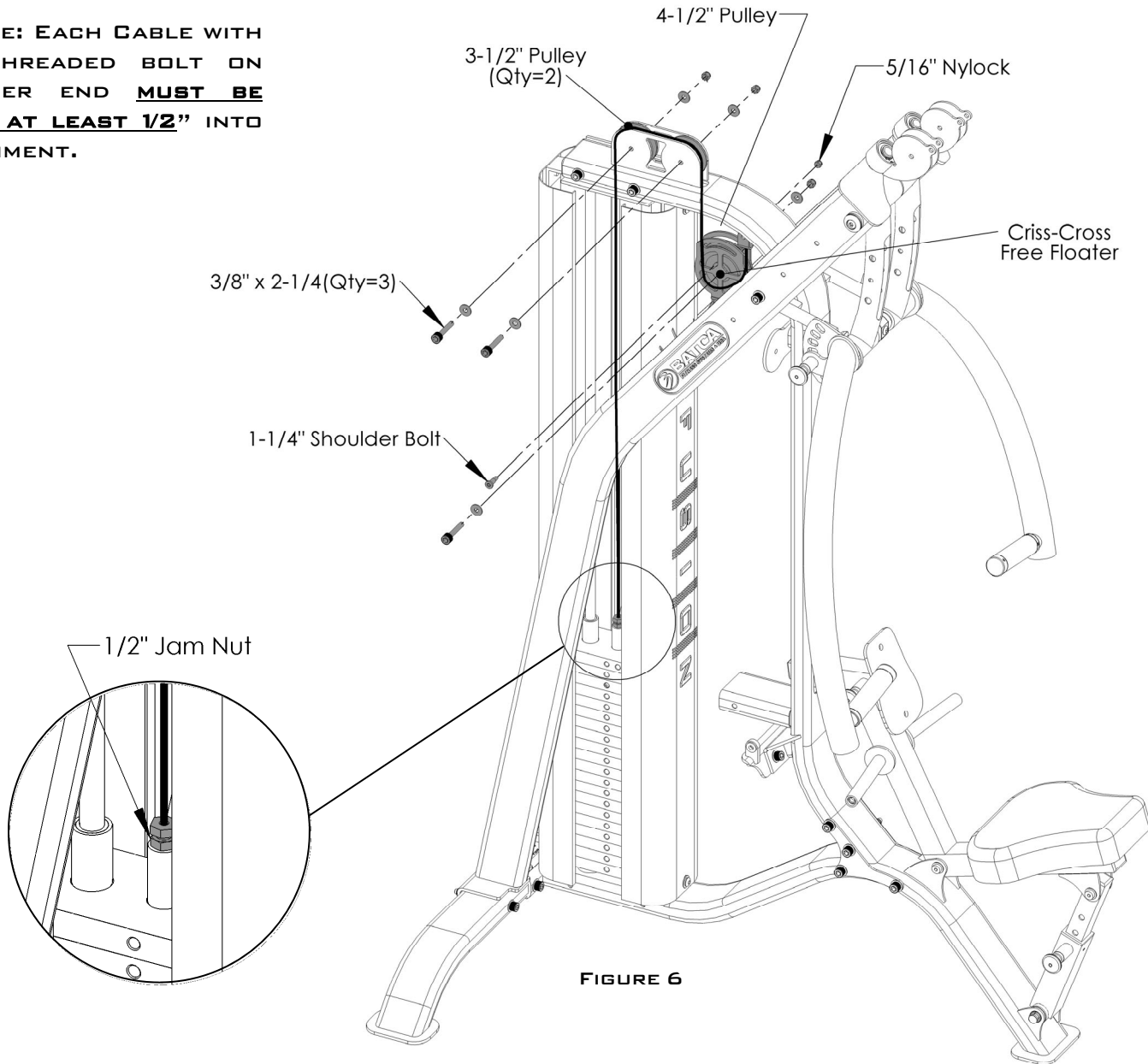
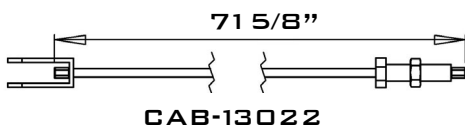


FIGURE 6



ALL FLAT WASHERS AND NYLOCKS ARE 3/8" UNLESS OTHERWISE NOTED.

| ITEM # | PART # | DESCRIPTION | QTY |
|--------|-----------|-------------------------------|-----|
| 25 | BFM-10611 | CRISS-CROSS FREE FLOATER | 1 |
| 38 | CAB-13022 | WEIGHT STACK TO CABLE TIE OUT | 1 |
| 48 | BFH-50146 | 3/8" FLAT WASHER | 6 |
| 50 | BFH-50157 | 3/8" NYLOCK | 3 |
| 61 | BFH-50173 | 3 1/2" PULLEY | 2 |
| 62 | BFH-50174 | 4 1/2" PULLEY | 1 |
| 63 | BFH-50250 | 1 1/4" SHOULDER BOLT | 1 |
| 64 | BFH-50267 | 5/16" NYLOCK | 1 |
| 65 | BFP-51752 | SHCS 3/8"-16 x 2 1/4" | 3 |

STEP 7:

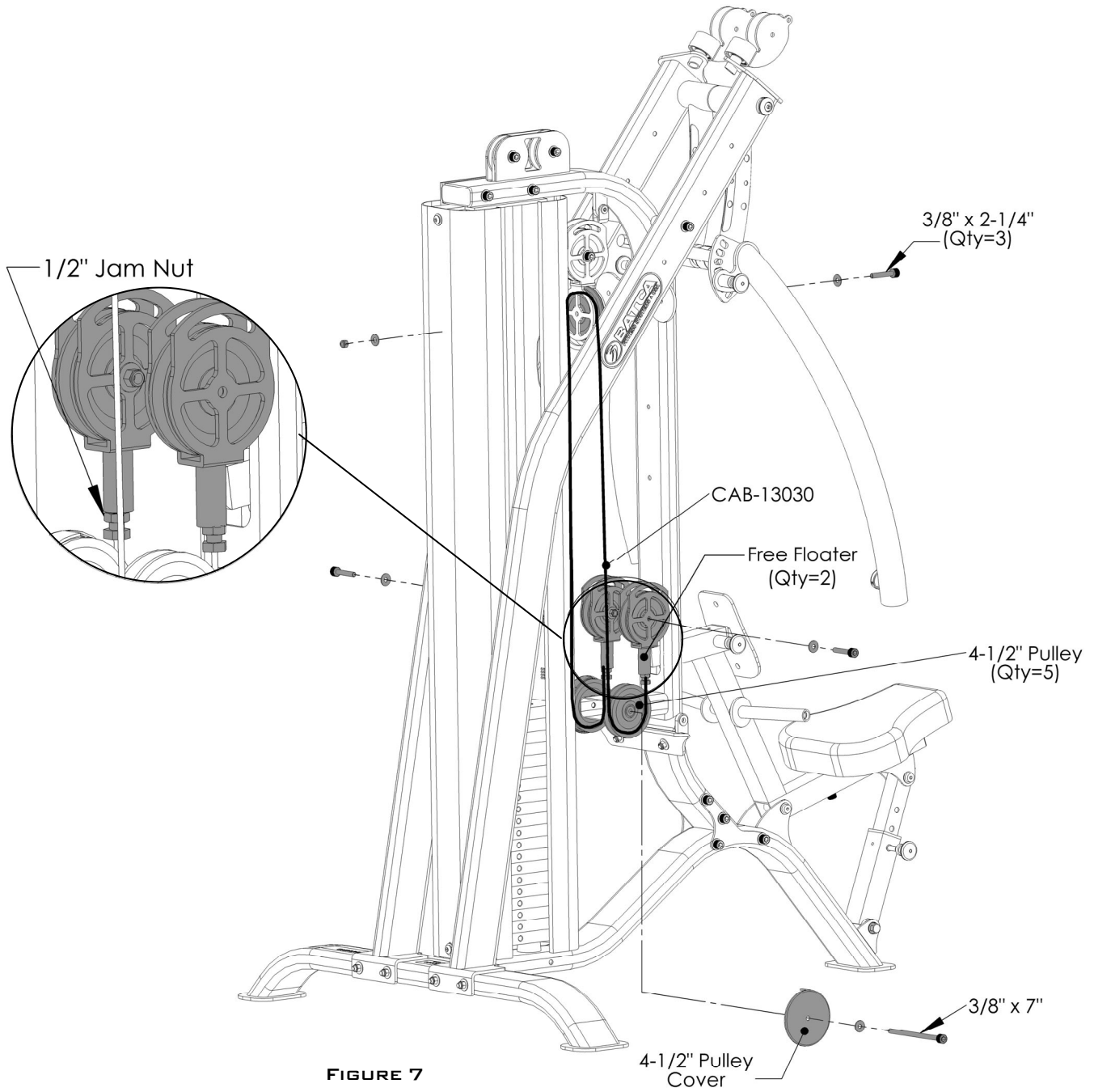
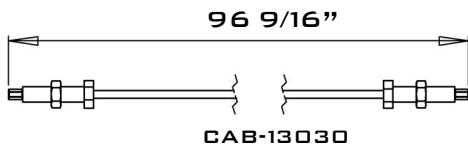


FIGURE 7

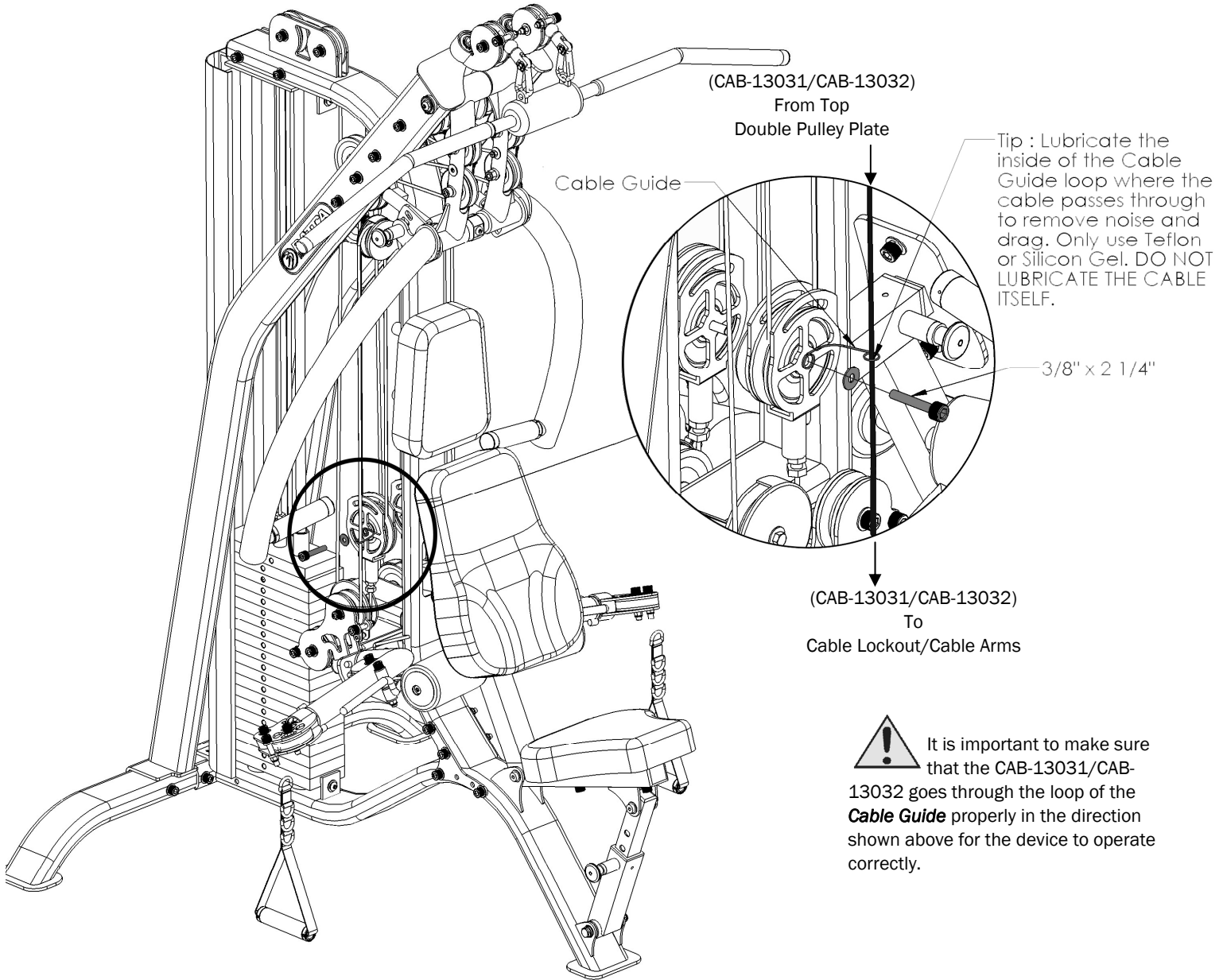


ALL FLAT WASHERS AND NYLOCKS ARE 3/8" UNLESS OTHERWISE NOTED.

| ITEM # | PART # | DESCRIPTION | QTY |
|--------|-----------|------------------------------|-----|
| 26 | BFM-10133 | FREE FLOATER | 2 |
| 27 | BFM-50345 | 4 1/2" PULLEY COVER | 2 |
| 39 | CAB-13030 | FUSION FLOATING PULLEY CABLE | 1 |
| 45 | BFP-51653 | SHCS 3/8"-16 x 2 1/4" | 3 |
| 48 | BFH-50146 | 3/8" FLAT WASHER | 8 |
| 50 | BFH-50157 | 3/8" NYLOCK | 4 |
| 62 | BFH-50174 | 4 1/2" PULLEY | 5 |
| 73 | BFP-52398 | SHCS 3/8"-16 x 7" | 1 |

Fusion 4 Cable Guide Assembly Instructions

The Cable Guide is designed to prevent the Free Floating Pulley Assemblies from twisting. This guide should be installed on both sides of the machine. Please install this part during Step 8 if Cable Arms were not purchased or Step 12 If Cable Arms were Purchased.



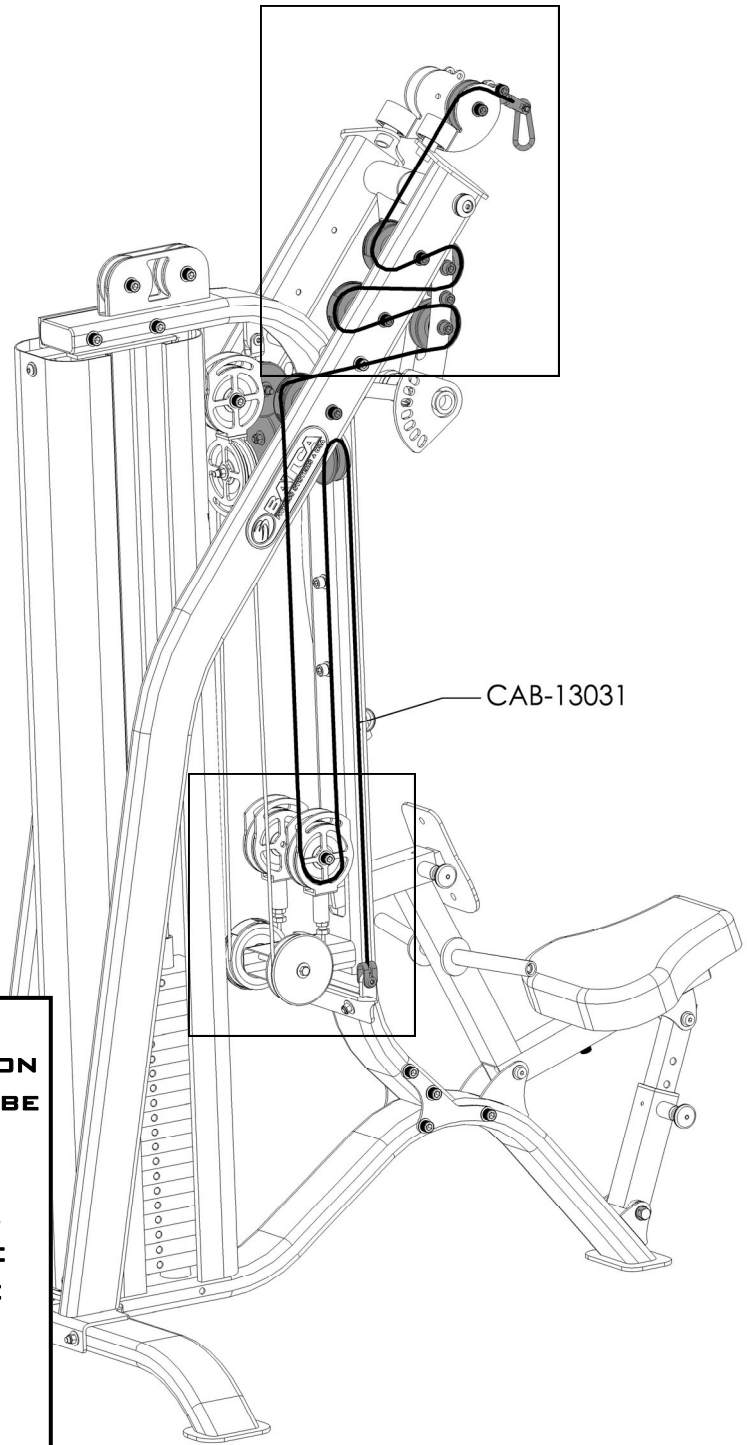
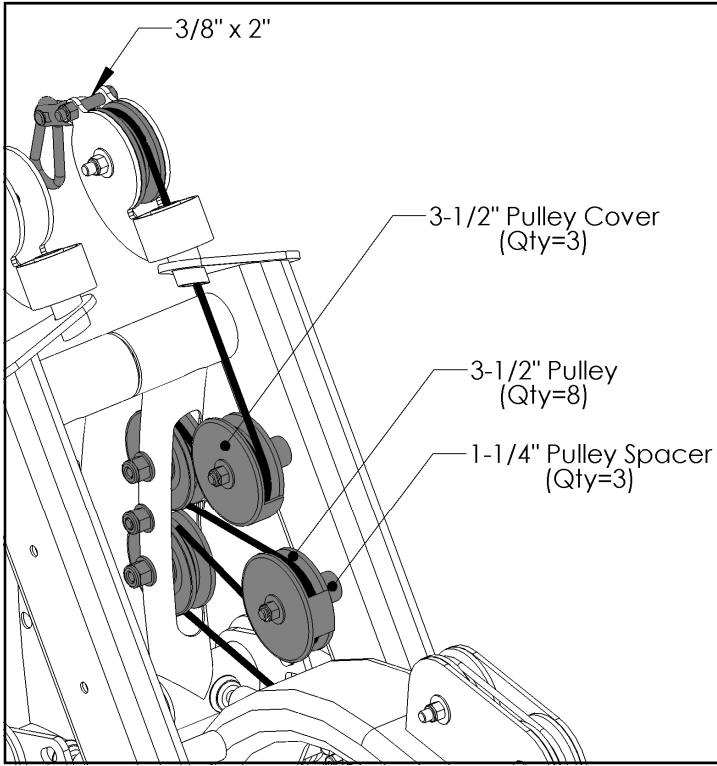
It is important to make sure that the CAB-13031/CAB-13032 goes through the loop of the **Cable Guide** properly in the direction shown above for the device to operate correctly.

| ITEM # | PART # | DESCRIPTION | QTY |
|--------|-----------|---------------------|-----|
| 93 | BFM-42450 | FUSION CABLE GUIDES | 2 |

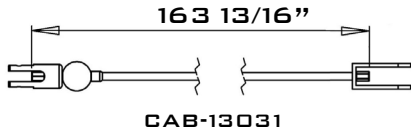
STEP 8:



NOTE: IF FUNCTIONAL ARM OPTION IS PURCHASED SKIP THIS STEP AND CONTINUE TO STEP 10 ON PAGE 18.




IT IS IMPORTANT TO MAKE SURE THAT THE CABLE IS TIGHT AND THERE IS EVEN TENSION ON BOTH OF THE CAB-13031 CABLES THAT WILL BE INSTALLED DURING THIS STEP. IF THESE TWO CABLES DO NOT HAVE THE SAME TENSION THIS COULD CAUSE PROBLEMS THAT MAY EFFECT THE OPERATION OF THE MACHINE. A LIST OF ALL THE AVAILABLE CABLE ADJUSTMENT LOCATIONS ARE ON PAGES 23-24 AS A GUIDE TO PROPERLY ADJUST THE CABLE TENSION THROUGHOUT THE MACHINE.

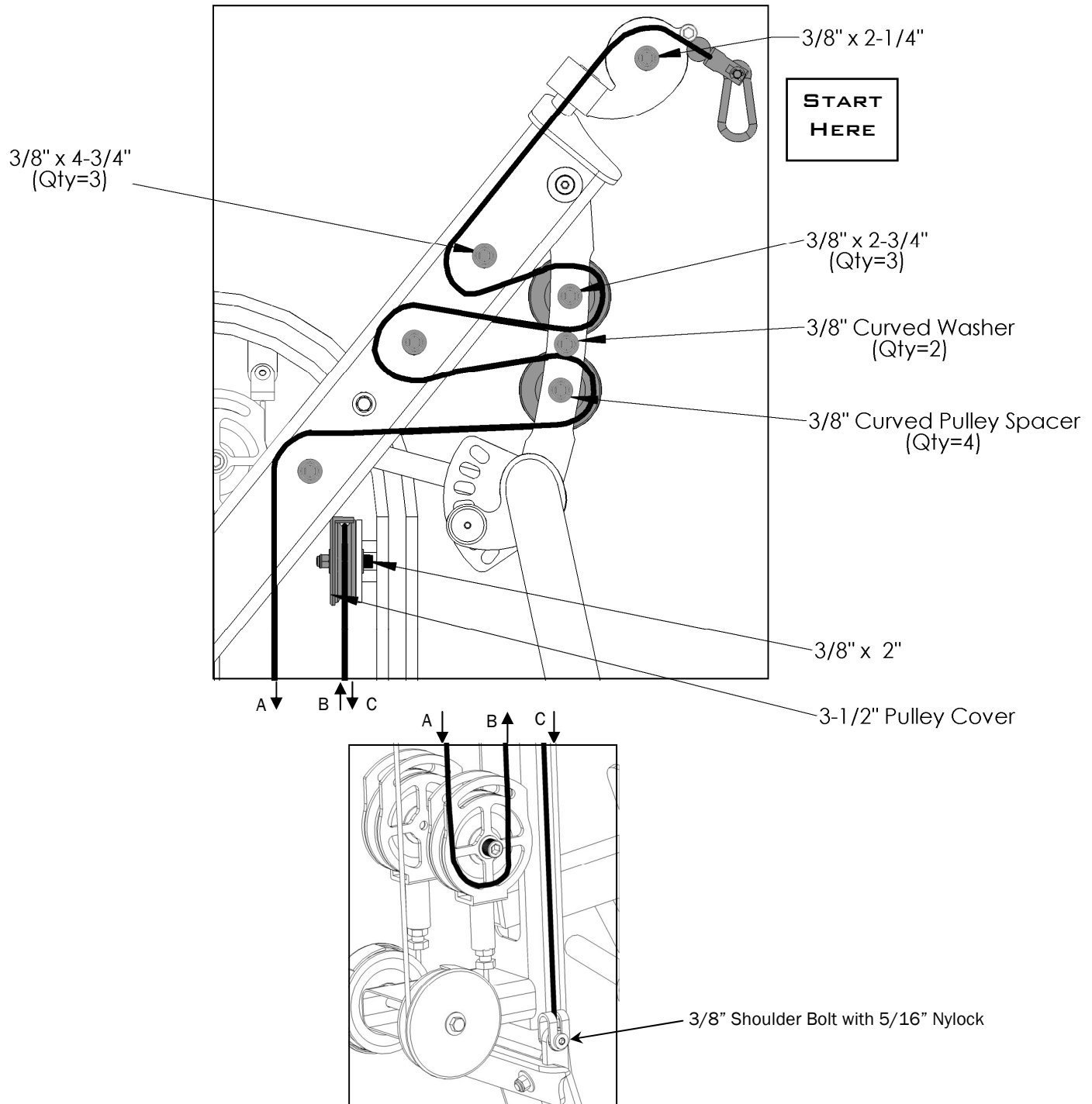


ALL FLAT WASHERS AND NYLOCKS ARE 3/8" UNLESS OTHERWISE NOTED.

| ITEM # | PART # | DESCRIPTION | QTY |
|--------|-----------|----------------------------------|-----|
| 40 | CAB-13031 | FUSION LAT PULL TO CABLE LOCKOUT | 1 |
| 28 | BFM-51022 | 1 1/4" PULLEY SPACER | 3 |
| 29 | BFM-50505 | 3 1/2" PULLEY COVER | 4 |
| 48 | BFH-50146 | 3/8" FLAT WASHER | 10 |
| 50 | BFH-50157 | 3/8" NYLOCK | 9 |
| 61 | BFH-50173 | 3 1/2" PULLEY | 7 |
| 63 | BFH-50250 | 1 1/4" SHOULDER BOLT | 1 |

| ITEM # | PART # | DESCRIPTION | QTY |
|--------|-----------|---------------------------|-----|
| 64 | BFH-50267 | 5/16" NYLOCK | 1 |
| 66 | BFH-50204 | 3/8" CURVED WASHER | 2 |
| 67 | BFH-50203 | 3/8" CURVED PULLEY SPACER | 4 |
| 68 | BFP-51759 | SHCS 3/8"-16 x 2" | 2 |
| 69 | BFP-51750 | SHCS 3/8"-16 x 2 3/4" | 3 |
| 65 | BFP-51752 | SHCS 3/8"-16 x 2 1/4" | 1 |
| 70 | BFP-51753 | SHCS 3/8"-16 x 4 3/4" | 3 |

STEP 8:  **ASSEMBLY TIP:** IT IS IMPORTANT IN ORDER TO PREVENT ANY CABLE TWISTING THE CABLE IS ROUTED AROUND EACH PULLEY INDIVIDUALLY AND PULLED ALL THE WAY THROUGH BEFORE ROUTING AROUND THE NEXT PULLEY IN THE CABLE ROUTING SEQUENCE. IF THIS IS NOT DONE PROPERLY DAMAGE AND TWISTING TO THE CABLE CAN OCCUR. ALSO, REMOVE CABLE END BEFORE ROUTING.



ALL FLAT WASHERS AND NYLOCKS ARE 3/8" UNLESS OTHERWISE NOTED.

STEP 9: REPEAT FOR ALTERNATE SIDE OF FUSION. USE SAME BILL OF MATERIALS FROM STEP 8 FOR STEP 9. USE CAB-13031, FUSION LAT PULL TO CABLE LOCKOUT.

STEP 10:

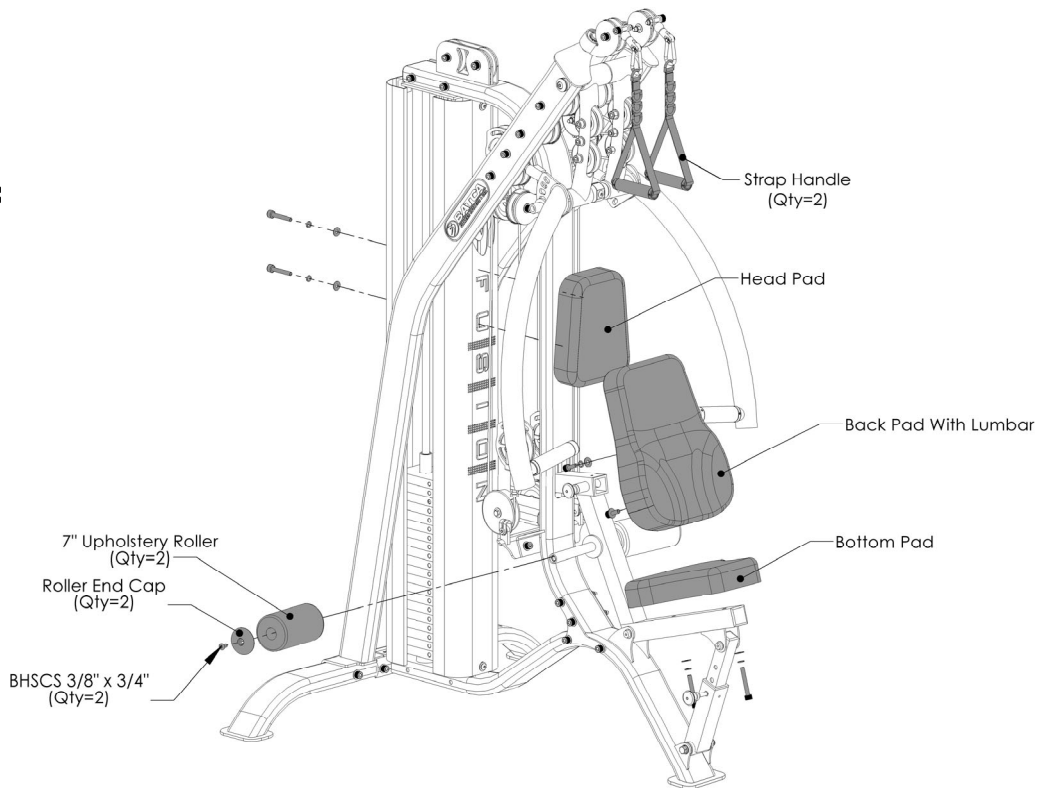
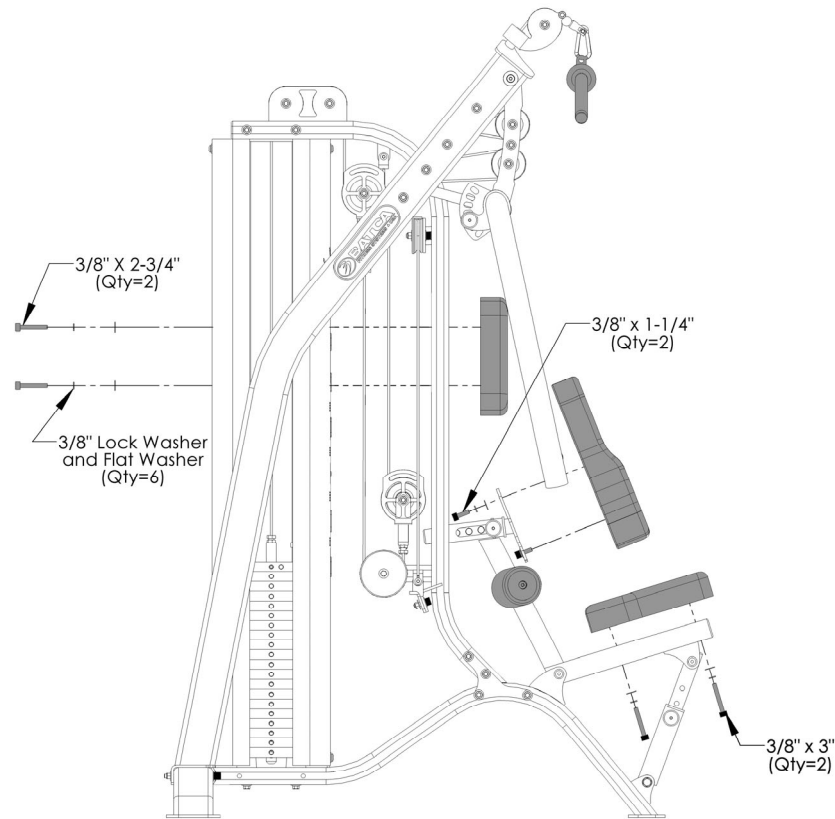


FIGURE 10



| ITEM # | PART # | DESCRIPTION | QTY |
|--------|-----------|----------------------|-----|
| 33 | BFC-10103 | STRAP HANDLE | 2 |
| 35 | BFP52137 | HEAD PAD | 1 |
| 36 | BFP-52136 | BACK PAD WITH LUMBAR | 1 |
| 37 | BFU-10121 | 7\"/> | |

| ITEM # | PART # | DESCRIPTION | QTY |
|--------|-----------|-------------|-----|
| 49 | BFH-50147 | 3/8\"/> | |

ALL FLAT WASHERS AND NYLOCKS ARE 3/8\"/>

FUNCTIONAL ARM OPTION

STEP 11:

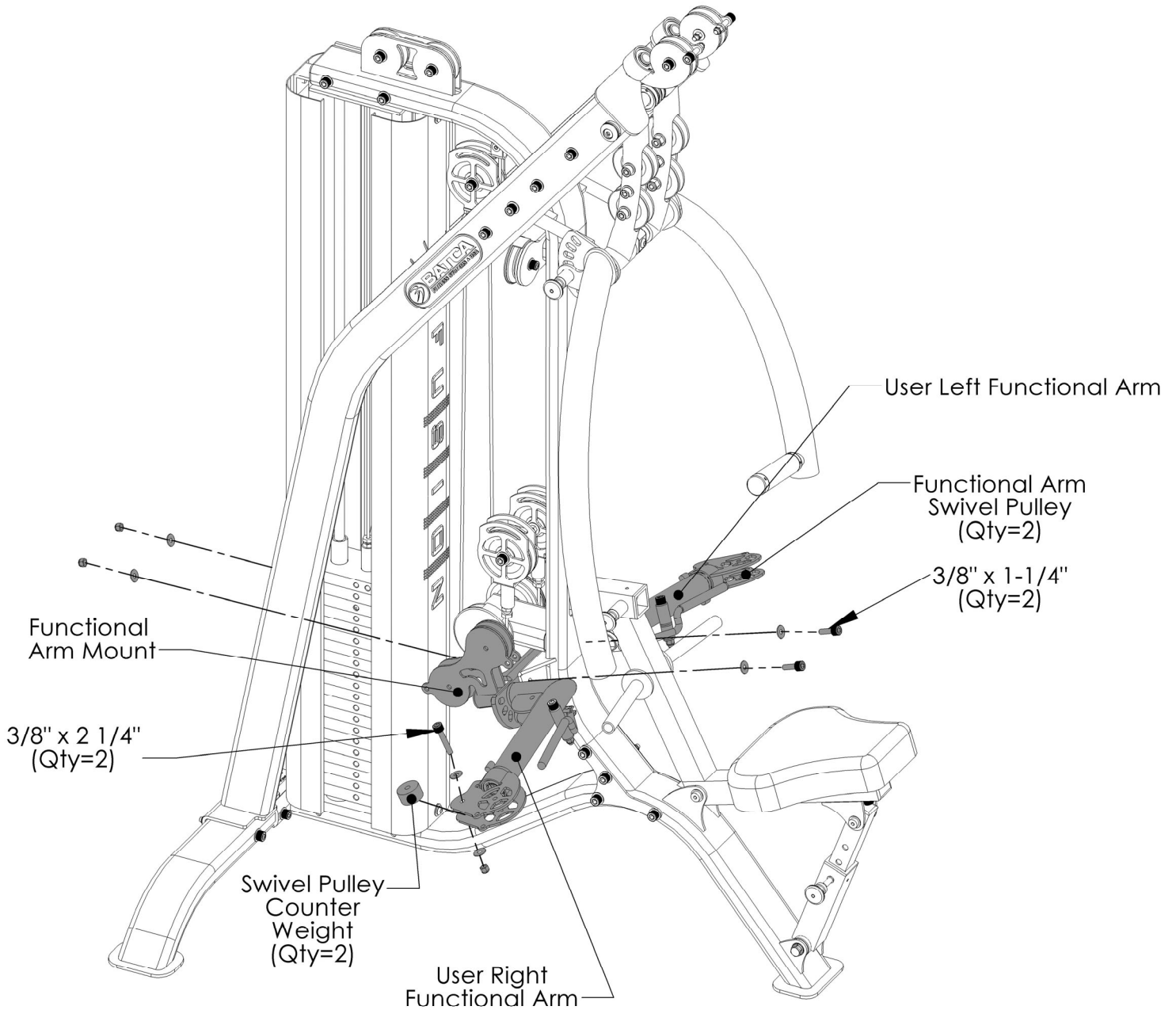


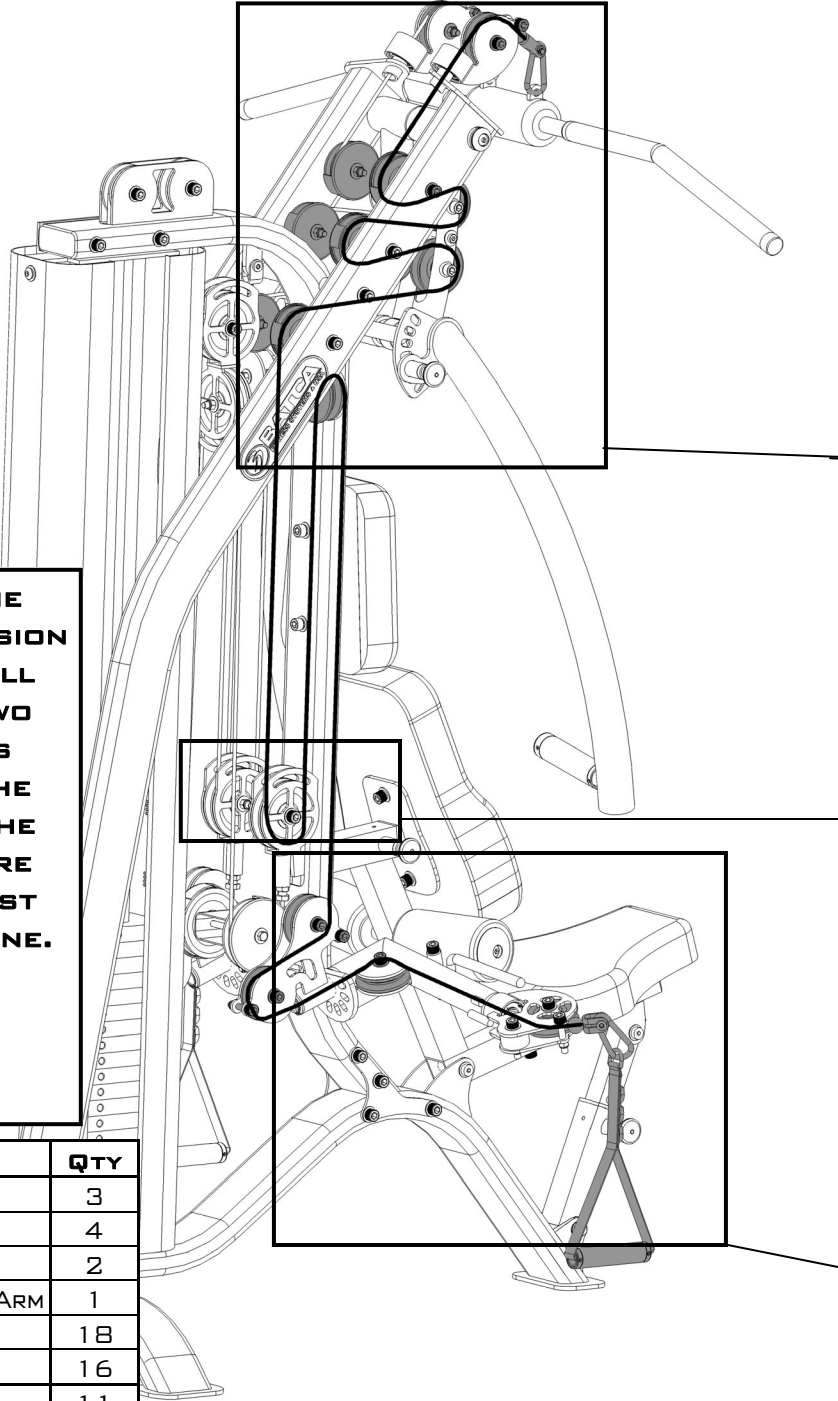
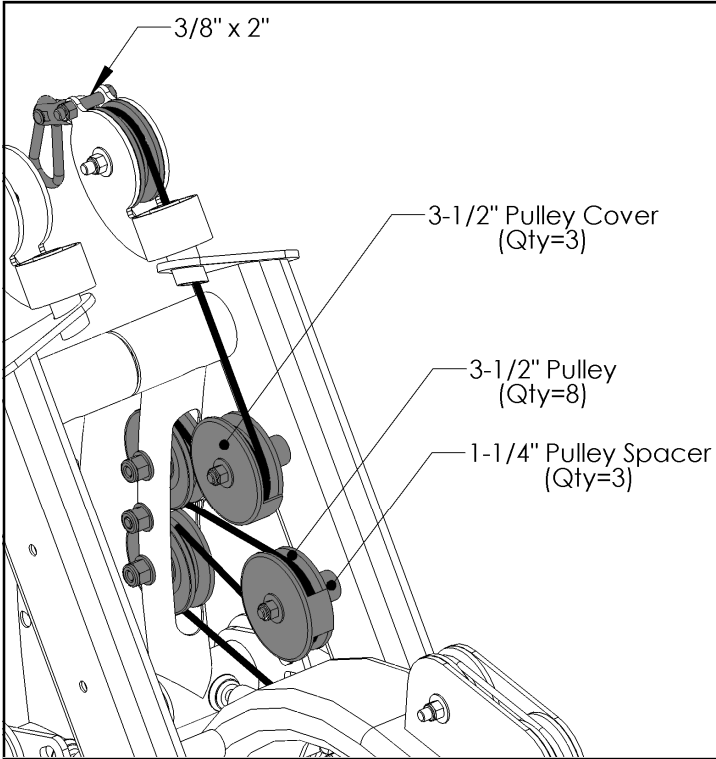
FIGURE 11

ALL FLAT WASHERS AND NYLOCKS ARE 3/8"
UNLESS OTHERWISE NOTED.

| ITEM # | PART # | DESCRIPTION | QTY |
|--------|-----------|------------------------------|-----|
| 74 | BFM-10573 | FUNCTIONAL ARM MOUNT | 1 |
| 75 | BFM-10571 | USER RIGHT FUNCTIONAL ARM | 1 |
| 76 | BFM-10572 | USER LEFT FUNCTIONAL ARM | 1 |
| 77 | BFM-10582 | FUNCTIONAL ARM SWIVEL PULLEY | 2 |
| 48 | BFH-50146 | 3/8" FLAT WASHER | 8 |
| 50 | BFH-50157 | 3/8" NYLOCK | 4 |
| 60 | BFP-51653 | SHCS 3/8"-16 x 1 1/4" | 2 |
| 65 | BFH-51752 | SHCS 3/8" x 2 1/4" | 2 |
| 92 | BFM-52416 | SWIVEL PULLEY COUNTER WEIGHT | 2 |

STEP 12:

ASSEMBLY TIP: IN ORDER TO HELP PREVENT CABLE TWISTING, MAKE SURE THE CABLE IS ROUTED AROUND EACH PULLEY INDIVIDUALLY AND PULLED ALL THE WAY THROUGH BEFORE ROUTING AROUND THE NEXT PULLEY IN THE CABLE ROUTING SEQUENCE. IF THIS IS NOT DONE PROPERLY DAMAGE AND TWISTING TO THE CABLE CAN OCCUR. ALSO, REMOVE CABLE END BEFORE ROUTING.



IT IS IMPORTANT TO MAKE SURE THAT THE CABLE IS TIGHT AND THERE IS EVEN TENSION ON BOTH OF THE CAB-13032 CABLES THAT WILL BE INSTALLED DURING THIS STEP. IF THESE TWO CABLES DO NOT HAVE THE SAME TENSION THIS COULD CAUSE PROBLEMS THAT MAY EFFECT THE OPERATION OF THE MACHINE. A LIST OF ALL THE AVAILABLE CABLE ADJUSTMENT LOCATIONS ARE PAGES 23-24 AS A GUIDE TO PROPERLY ADJUST THE CABLE TENSION THROUGHOUT THE MACHINE.

200"

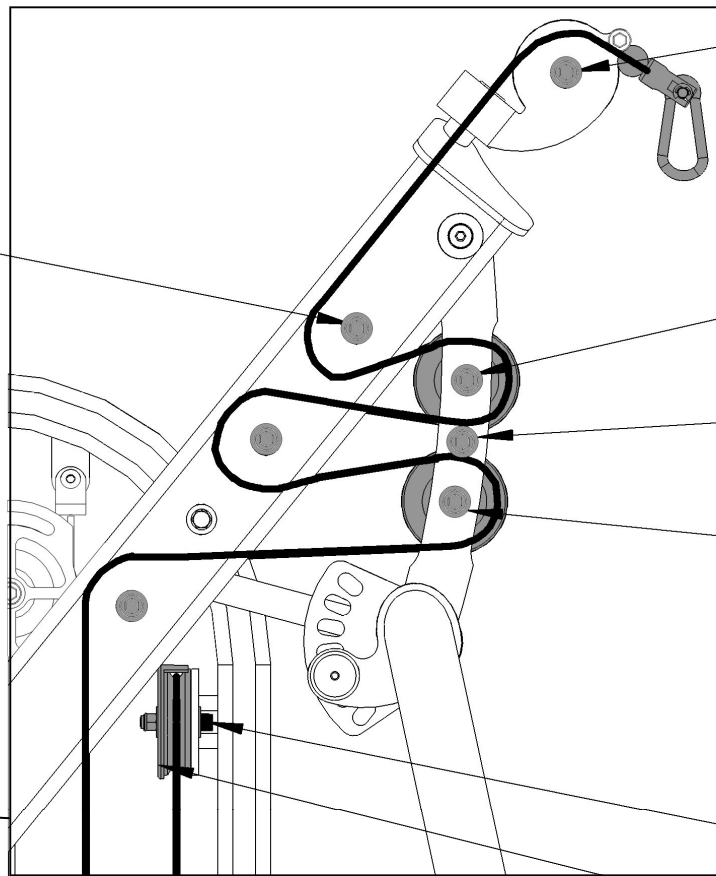
CAB-13032

| ITEM # | PART # | DESCRIPTION | QTY |
|--------|-----------|-----------------------------------|-----|
| 28 | BFM-51022 | 1 1/4" SPACER | 3 |
| 29 | BFM-50505 | 3 1/2" PULLEY COVER | 4 |
| 33 | BFC-10103 | STRAP HANDLE | 2 |
| 86 | CAB-13032 | FUSION LAT PULL TO FUNCTIONAL ARM | 1 |
| 48 | BFH-50146 | 3/8" FLAT WASHER | 18 |
| 50 | BFH-50157 | 3/8" NYLOCK | 16 |
| 61 | BFH-50173 | 3 1/2" PULLEY | 11 |
| 65 | BFP-51752 | SHCS 3/8"-16 X 2 1/4" | 5 |
| 66 | BFH-50204 | 3/8" CURVED WASHER | 2 |
| 67 | BFH-50203 | 1/2" CURVED PULLEY SPACER | 4 |
| 68 | BFP-51759 | SHCS 3/8"-16 X 2" | 5 |
| 69 | BFP-51750 | SHCS-3/8"-16 x 2-3/4" | 3 |
| 70 | BFP-51753 | SHCS 3/8"-16 X 4 3/4" | 3 |

ALL FLAT WASHERS AND NYLOCKS ARE 3/8" UNLESS OTHERWISE NOTED.

STEP 12 CONTINUED:

3/8" x 4-3/4"
(Qty=3)



3/8" x 2-1/4"

**START
HERE**

3/8" x 2-3/4"
(Qty=3)

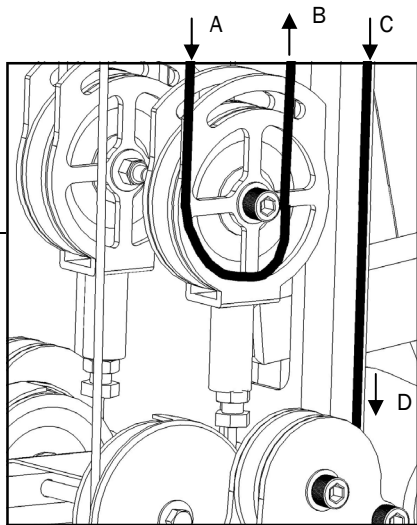
3/8" Curved Washer
(Qty=2)

3/8" Curved Pulley Spacer
(Qty=4)

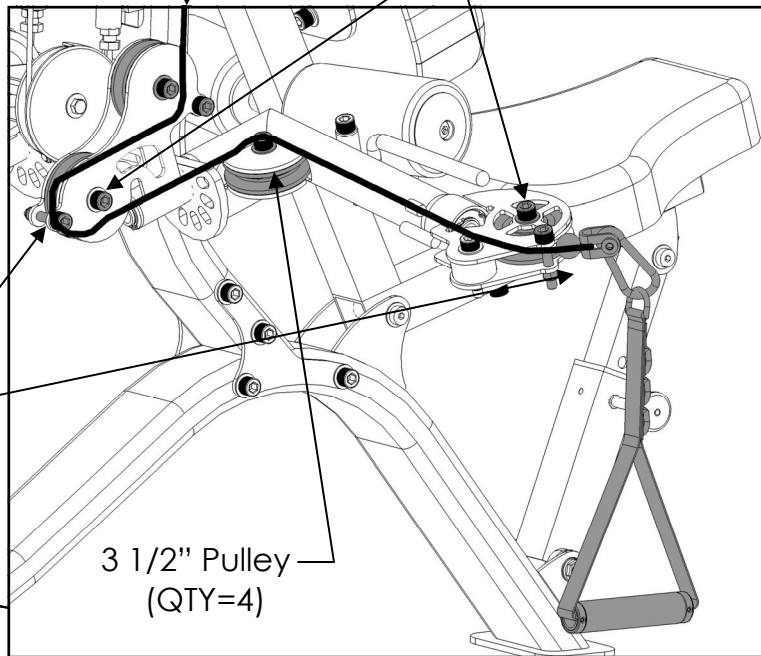
3/8" x 2"

3-1/2" Pulley Cover

A B C



3/8" x 2 1/4"
(Qty=4)



3/8" x 2"
(Qty=3)
No Washers

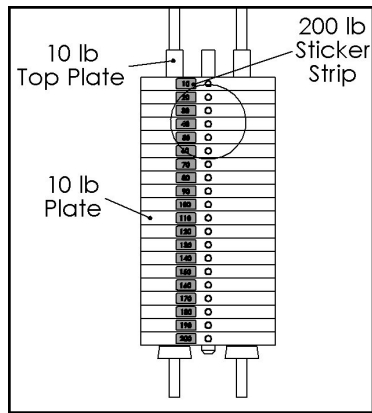
3 1/2" Pulley
(QTY=4)

ALL FLAT WASHERS AND NYLOCKS ARE 3/8" UNLESS OTHERWISE NOTED.

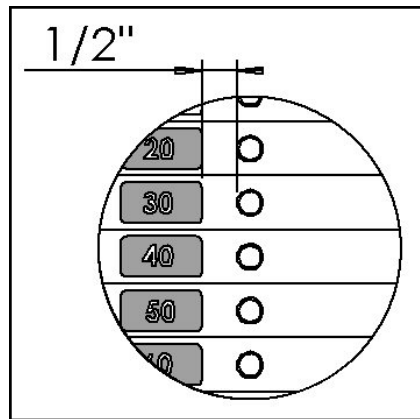
STEP 13: REPEAT FOR ALTERNATE SIDE OF FUSION. USE SAME BILL OF MATERIALS FROM STEP 12 FOR STEP 13. USE CAB-13032, FUSION LAT PULL TO FUNCTIONAL ARM.

STEP 14:

WEIGHT STACK DECALS:



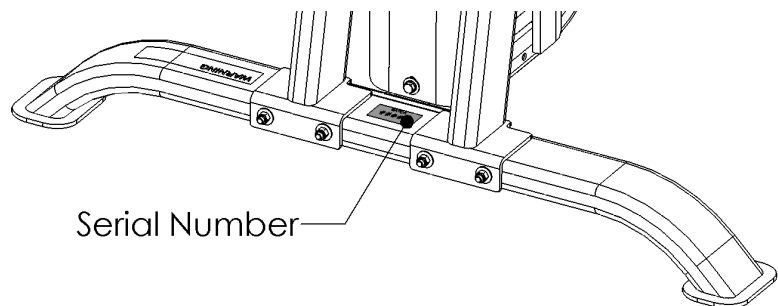
200lb Stack (Standard)



GUIDE ROD LUBRICATION:

- CLEAN GUIDE RODS WITH A LINT-FREE CLOTH AND APPLY A THIN LAYER OF SILICON LUBRICANT (PART # BFH-50262) TO EACH GUIDE ROD. THIS WILL ENSURE A GLASS SMOOTH PERFORMANCE FROM YOUR WEIGHT STACK.

SERIAL NUMBER:

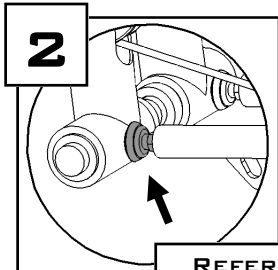


- **RECORD** YOUR SERIAL NUMBER ON THE FRONT OF THIS MANUAL AND KEEP FOR YOUR RECORDS. THE SERIAL NUMBER CAN BE FOUND ON THE BACK OF THE CAGE AS SEEN IN THE FIGURE.

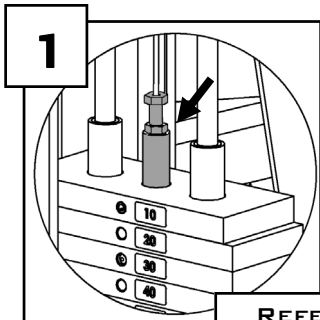
Cable Adjustments

- **ADJUST** CABLES TO PROPER TENSION FROM ANY OF THE LOCATIONS SHOWN BELOW.
- **HOW TO BEGIN:** IN ORDER TO GET THE PROPER TENSION IN YOUR CABLES, IT IS RECOMMENDED THAT YOU FOLLOW THE SEQUENCE 1-5 AS SHOWN ON PAGES 24 AND 25. THE NUMBERS FOR THIS SEQUENCE CAN BE FOUND IN THE UPPER LEFT CORNER OF EACH OF THE DETAILED VIEWS. EACH DETAILED VIEW BELOW WILL REFER YOU TO THE ORIGINAL FIGURE FOR MORE DETAILED INFORMATION. FOLLOW THE DETAILED INFORMATION FOUND IN EACH REFERENCED FIGURE.

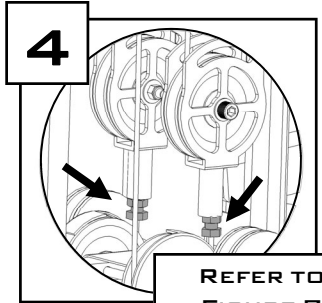
- **NOTE:** IF THE TOP PLATE RAISES OFF OF THE SECOND PLATE IN THE WEIGHT STACK, THEN THE CABLE TENSION IS TOO TIGHT. YOU WILL NEED TO TAKE SOME OF THE TENSION OUT TO LOWER THE TOP PLATE FLUSH WITH THE SECOND PLATE.



REFER TO
FIGURE 8
AND 11



REFER TO
FIGURE 6

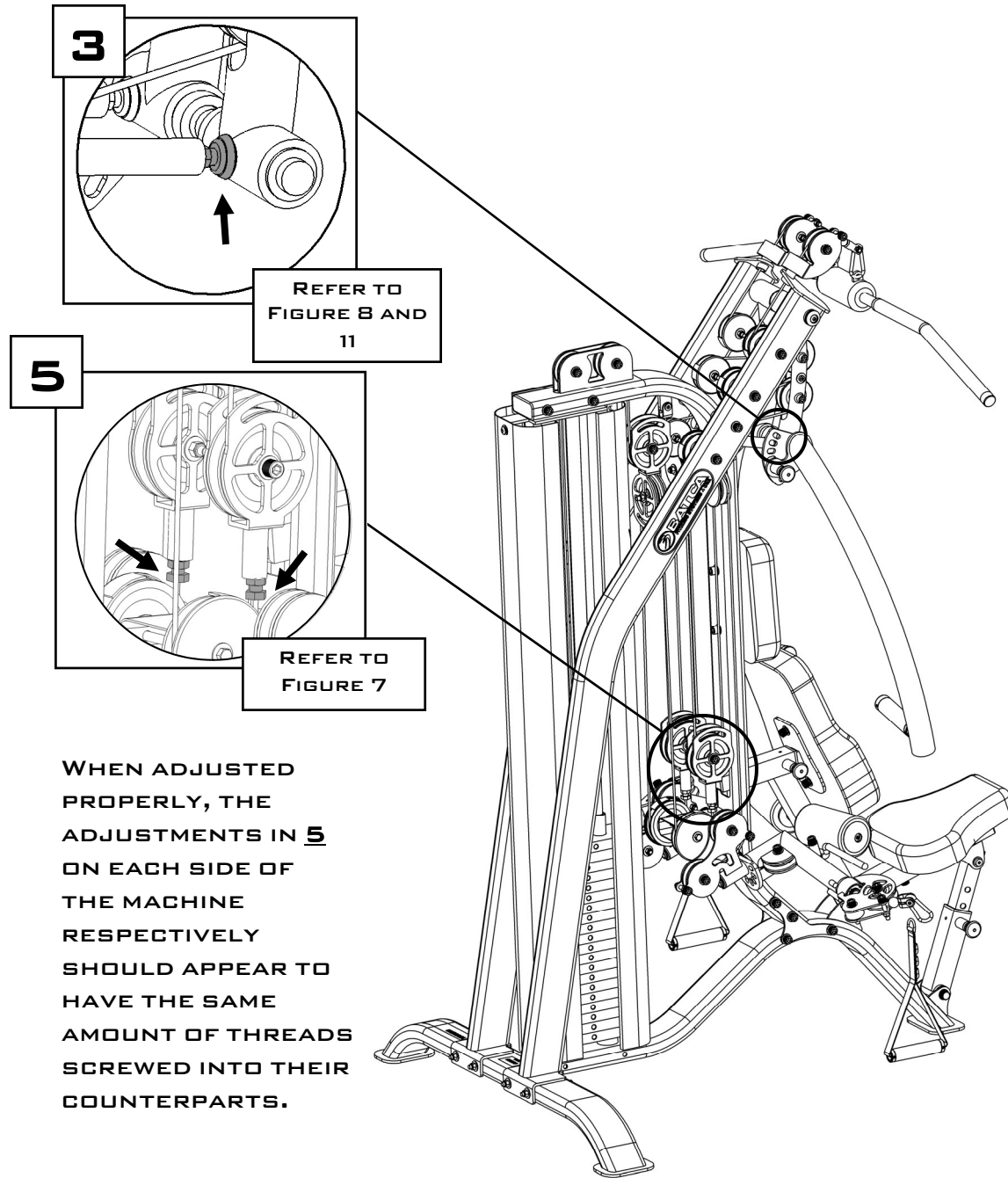


REFER TO
FIGURE 7

WHEN ADJUSTED PROPERLY, THE ADJUSTMENTS IN **4** ON EACH SIDE OF THE MACHINE RESPECTIVELY SHOULD APPEAR TO HAVE THE SAME AMOUNT OF THREADS SCREWED INTO THEIR COUNTERPARTS.



NOTE: ALL CABLES WITH THREADED ADJUSTABLE ENDS MUST HAVE AT LEAST 1/2" OF THE THREADS THREADED INTO ITS COUNTERPART. IT IS VERY IMPORTANT THAT THE 1/2" JAM NUT BE WRENCH TIGHTENED TO THE COUNTERPART TO ENSURE THAT THE THREADED ADJUSTABLE END OF THE CABLE DOES NOT BACK OUT OF ITS COUNTERPART.

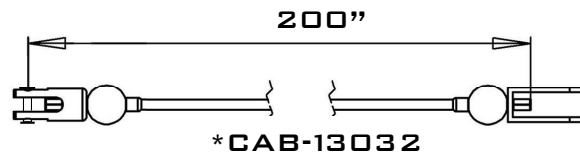
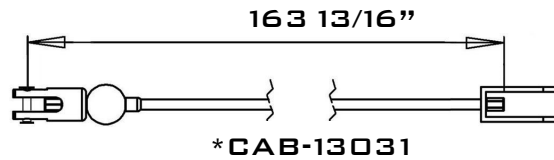
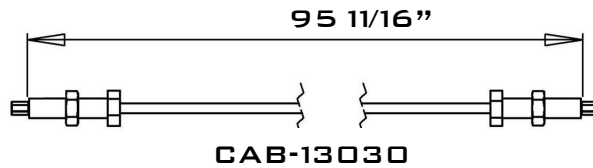
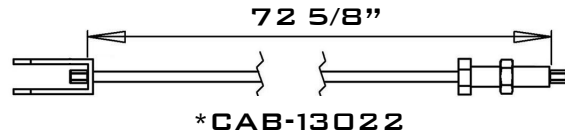


WHEN ADJUSTED PROPERLY, THE ADJUSTMENTS IN **5** ON EACH SIDE OF THE MACHINE RESPECTIVELY SHOULD APPEAR TO HAVE THE SAME AMOUNT OF THREADS SCREWED INTO THEIR COUNTERPARTS.



NOTE: ALL LEVELERS AND CABLES WITH A THREADED END SHOULD HAVE AT LEAST 1/2" OF THE THREADS THREADED IN TO ITS COUNTERPART. IT IS VERY IMPORTANT THAT THE 3/8" JAM NUT BE WRENCH TIGHTENED TO THE COUNTERPART TO ENSURE THAT THE LEVELER OR BOLT DOES NOT BACK OUT OF THE COUNTERPART.

CABLE COMPARISON CHART



CABLES

| ITEM NO. | PART NUMBER | DESCRIPTION | QTY |
|----------|-------------|-----------------------------------|-----|
| 38 | CAB-13022 | WEIGHT STACK TO CABLE TIE OUT | 1 |
| 39 | CAB-13030 | FUSION FLOATING PULLEY CABLE | 1 |
| 40 | CAB-13031 | FUSION LAT PULL TO CABLE LOCKOUT | 2 |
| 86 | CAB-13032 | FUSION LAT PULL TO FUNCTIONAL ARM | 2 |

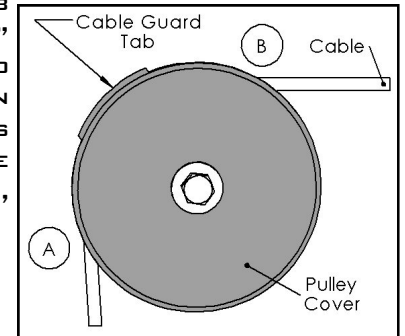


NOTE: CABLES CAB-13022, CAB-13031, AND CAB-13032 HAVE REMOVABLE CABLE STRAP (BFH- 50227) ENDS TO MAKE CABLE ROUTING EASIER. THE CABLE STRAP ENDS CAN BE FOUND PACKAGED WITH THE HARDWARE.

FINAL ASSEMBLY AND TROUBLESHOOTING

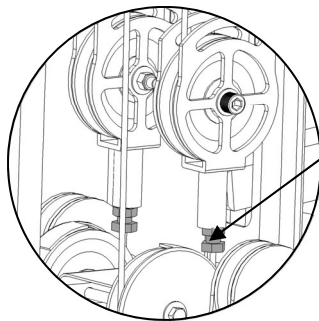
IMPORTANT - CHECK THESE COMPONENTS BEFORE USING GYM:

- **POSITION** THE CABLE GUARD TAB ON THE PULLEY COVER SO THAT THE TAB PREVENTS THE CABLE FROM COMING OUT OF IT'S TRACK ON THE 3 1/2" PULLEY. AN EXAMPLE OF THIS POSITIONING CAN BE SEEN IN THE FIGURE TO THE RIGHT. THE CABLE GUARD TAB SHOULD BE POSITIONED SO THAT IT IS IN THE MIDDLE OF THE CABLE WRAP ON THE 3 1/2" PULLEY, BETWEEN POINTS "A" AND "B". THIS WILL ALLOW BETTER PROTECTION AND PREVENT THE CABLE FROM RUBBING THE CABLE GUARD TAB. REFER TO STEPS 8, 9, 12, AND 13.



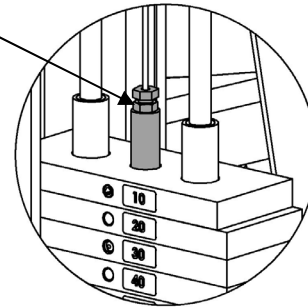
PULLEY COVER
BFM-50345

- EACH CABLE WITH A THREADED BOLT ON EITHER END **MUST BE THREADED AT LEAST 1/2"** INTO ITS ATTACHMENT, WHETHER IT BE A FREE FLOATER, LOCKOUT FREE FLOATER, OR THE TOP PLATE OF THE WEIGHT STACK. EACH MUST ALSO BE SECURED WITH A 1/2" JAM NUT TO ENSURE A SAFE AND PROPER CONNECTION. REFER TO STEPS 6, 7, 8, 9, 12, AND 13. SEE FIGURES BELOW.



FREE FLOATER W/
LOCKOUT

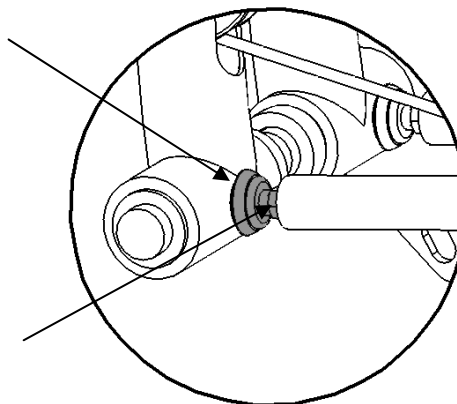
1/2" JAM
NUT



TOP PLATE

- EACH ADJUSTMENT LEVELER **MUST BE THREADED 1/2"** INTO ITS COUNTERPART. EACH MUST BE SECURED WITH A 3/8" JAM NUT TO ENSURE A SAFE PROPER CONNECTION. REFER TO STEPS 3, 8, 9, 12, AND 13. SEE FIGURES BELOW.

BEVELED LEVELER



3/8" JAM NUT

PREVENTIVE MAINTENANCE

BATCA FITNESS SYSTEMS STRIVES TO GIVE YOU THE VERY BEST IN QUALITY, PERFORMANCE AND SAFETY THROUGH CAREFULLY ENGINEERED DESIGNS AND EXCELLENT WORKMANSHIP. IN ORDER TO MAINTAIN THIS HIGH LEVEL OF QUALITY THE PREVENTATIVE MAINTENANCE SCHEDULE BELOW SHOULD BE FOLLOWED.

CLEAN UPHOLSTERY, GRIPS, AND ROLLER PADS WITH MILD SOAP AND WATER GENERALLY AFTER EVERY USE. THE GUIDE RODS, CHROME SLIDES AND FRAME SHOULD BE CLEANED WITH A COTTON CLOTH. UPON CLEANING THE GUIDE RODS, A THIN LAYER OF SILICONE OR TEFLON GEL SHOULD BE APPLIED TO EACH ROD TO ENSURE A GLASS SMOOTH PERFORMANCE.

AN OVERALL INSPECTION SHOULD BE DONE BEFORE EACH WORKOUT. IF THE WARNING AND SAFETY DECALS ARE WORN OR HAVE BEEN REMOVED THEY SHOULD BE REPLACED IMMEDIATELY. THE CABLES AND CABLE SYSTEMS SHOULD BE INSPECTED FOR SIGNS OF WEAR AND PROPER TENSION. IN ORDER TO CHECK CABLES PROPERLY YOU SHOULD CAREFULLY RUN THE CABLE THROUGH YOUR FINGERTIPS, CHECKING FOR SIGNS OF WEAR, CRACKS, BURS AND THINNING SPOTS. REPLACE ANY PART AT FIRST SIGNS OF WEAR. CABLES SHOULD BE ADJUSTED FOR PROPER TENSION. SEE ASSEMBLY INSTRUCTIONS FOR THIS DETAIL. ALL HARDWARE, STOPS, AND ADJUSTMENTS SHOULD BE CHECKED AND TIGHTENED AS REQUIRED.

THE GUIDE RODS ON YOUR MACHINE SHOULD BE CLEANED AND LUBRICATED REGULARLY. THIS WILL ENSURE A GLASS SMOOTH PERFORMANCE FROM YOUR WEIGHT STACK. A THIN LAYER OF EITHER SILICONE OR TEFLON GEL SHOULD APPLIED TO EACH ROD.

ALTHOUGH CABLES SHOULD BE INSPECTED DAILY, IT IS IMPORTANT THAT ALL CABLES BE REPLACED AS DIRECTED IN THE SCHEDULE BELOW. PLEASE NOTE THAT AT ANY FIRST SIGN OF WEAR THE CABLE SHOULD BE REPLACED IMMEDIATELY.

IF THERE ARE ANY QUESTIONS CONCERNING MAINTENANCE, PLEASE CONTACT YOUR LOCAL BATCA DEALER OR CONTACT BATCA FITNESS SYSTEMS DIRECTLY AT:

BATCA FITNESS SYSTEMS

(919) 255-1233

WWW.BATCAFITNESS.COM

| | DAILY | WEEKLY | MONTHLY | QUARTERLY | YEARS |
|------------------|-------|--------|---------|-----------|-------|
| CLEAN | | | | | |
| UPHOLSTERY | | X | | | |
| HAND GRIPS | | X | | | |
| ROLLER PADS | | X | | | |
| GUIDE RODS | | | X | | |
| CHROME SLIDES | | | X | | |
| FRAME | | | X | | |
| INSPECT | | | | | |
| OVERALL | X | | | | |
| SAFETY DECALS | X | | | | |
| CABLES | X | | | | |
| CABLE TENSION | | | X | | |
| PULLEYS | X | | | | |
| HARDWARE | X | | | | |
| STOPS | X | | | | |
| UPHOLSTERY | X | | | | |
| HAND GRIPS | | | X | | |
| FRAME | | | X | | |
| BUSHINGS | | X | | | |
| BEARINGS | | X | | | |
| LUBRICATE | | | | | |
| GUIDE RODS | | | X | | |
| REPLACE | | | | | |
| CABLES | | | | | 3 |

LIMITED LIFETIME WARRANTY

WHAT IS COVERED

FOR RESIDENTIAL USE:

BATCA FITNESS SYSTEMS WARRANTS ALL OF ITS PRODUCTS AGAINST DEFECTS IN MANUFACTURING, MATERIALS AND WORKMANSHIP UNDER NORMAL USE AND SERVICE FOR ONE YEAR FROM DATE OF PURCHASE INCLUDING PAINT, CHROME, UPHOLSTERY AND GRIPS. BATCA FITNESS SYSTEMS ALSO WARRANTS ALL CABLES, BELTS, BOLTS, NUTS, CAPS, PLUGS, BUMPERS, WASHERS, LEVELERS, DECALS, GAS SPRINGS AND OTHER HARDWARE FOR THREE YEARS AFTER DATE OF PURCHASE; ALL MOVING PARTS, INCLUDING PULLEYS, BUSHINGS, BEARINGS AND PULL PINS FOR FIVE YEARS AFTER DATE OF PURCHASE AND WARRANTS THE FRAME AND ALL WELDED PARTS FOR THE LIFETIME OF THE ORIGINAL PURCHASER.

WHAT IS NOT COVERED

THIS WARRANTY DOES NOT COVER DAMAGE, WHICH RESULTS FROM SHIPPING, MISUSE, ABUSE, NEGLIGENCE, CARELESSNESS, MODIFICATION OR ALTERATION, ACCIDENT, FIRE, FLOOD, "ACTS OF GOD" OR OTHER CONTINGENCIES BEYOND THE CONTROL OF BATCA FITNESS SYSTEMS. THIS WARRANTY ALSO DOES NOT COVER DETERIORATION FROM WEAR AND TEAR OR EXPOSURE OR ANY DEFECT, WHICH WOULD NOT HAVE HAPPENED IF INSTRUCTIONS IN THE OWNER'S MANUAL HAD BEEN FOLLOWED. IMPROPER INSTALLATION, IMPROPER ASSEMBLY OR FOLLOW-UP MAINTENANCE ALONG WITH INSTALLATION OF PARTS OR ACCESSORIES NOT ORIGINALLY INTENDED FOR PRODUCTS OF BATCA FITNESS SYSTEMS ARE ALSO NOT COVERED BY THIS WARRANTY. ONLY GENUINE BATCA PARTS SHOULD BE USED FOR REPLACEMENT, REPAIR, AND MAINTENANCE FOR THIS WARRANTY TO APPLY.

DEFECTIVE PARTS WILL BE REPAIRED OR REPLACED AT BATCA FITNESS SYSTEMS OPTION, WITHOUT PARTS CHARGE TO THE PURCHASER. ALL RETURNS REQUIRE A RETURN AUTHORIZATION PRIOR TO ACCEPTANCE OF REPAIR WORK. BATCA FITNESS SYSTEMS RESERVES THE RIGHT TO MAKE DESIGN CHANGES WITHOUT ANY PRIOR NOTIFICATION AND SHALL NOT BE RESPONSIBLE FOR INCIDENTAL OR CONSEQUENTIAL DAMAGES.

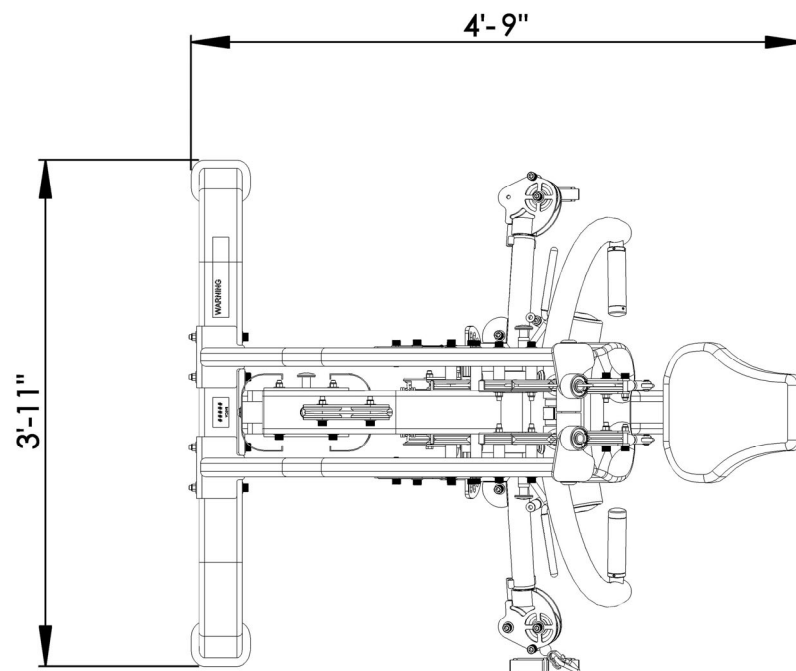
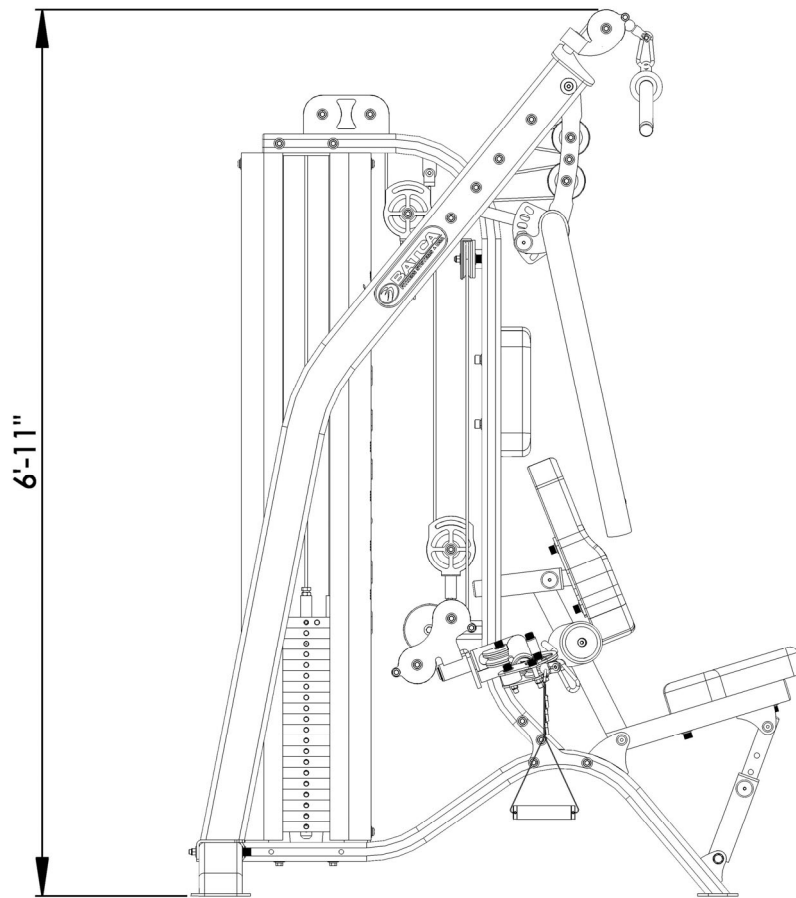
THE PURCHASER IS RESPONSIBLE FOR SHIPPING THE DEFECTIVE PART BACK TO THE FACTORY. REPAIR OR REPLACEMENT IS THE EXCLUSIVE AND SOLE REMEDY OF THE PURCHASER. LABOR CHARGES ASSOCIATED WITH PARTS CHANGEDOVERS ARE NOT COVERED BY THIS WARRANTY. PROOF OF PURCHASE, SERIAL NUMBER, MODEL NUMBER AND DATE OF PURCHASE WILL BE REQUIRED ALONG WITH ALL PERTINENT INFORMATION OF THE ALLEGED DAMAGE.

THIS WARRANTY APPLIES ONLY TO THE ORIGINAL PURCHASER AND IS NOT TRANSFERABLE. CLAIMS UNDER THIS WARRANTY MUST BE MADE DIRECTLY TO BATCA FITNESS SYSTEMS.

BATCA FITNESS SYSTEMS
1207 N. NEW HOPE ROAD
RALEIGH, NC 27610
(919) 255-1233

WWW.BATCAFITNESS.COM

PLEASE KEEP THIS FOR YOUR RECORDS.



LAYOUT DIAGRAM

THE FUSION WITH LEG PRESS HAS A LAYOUT DIMENSION OF 3'-11" (WIDTH) X 4'-9" (LENGTH) X 6'-11" (HEIGHT). THERE SHOULD BE A MINIMUM OF 18", PREFERABLY 24", OF WORKING SPACE AROUND THE ENTIRE UNIT.